



GATES COUNTY SCHOOLS

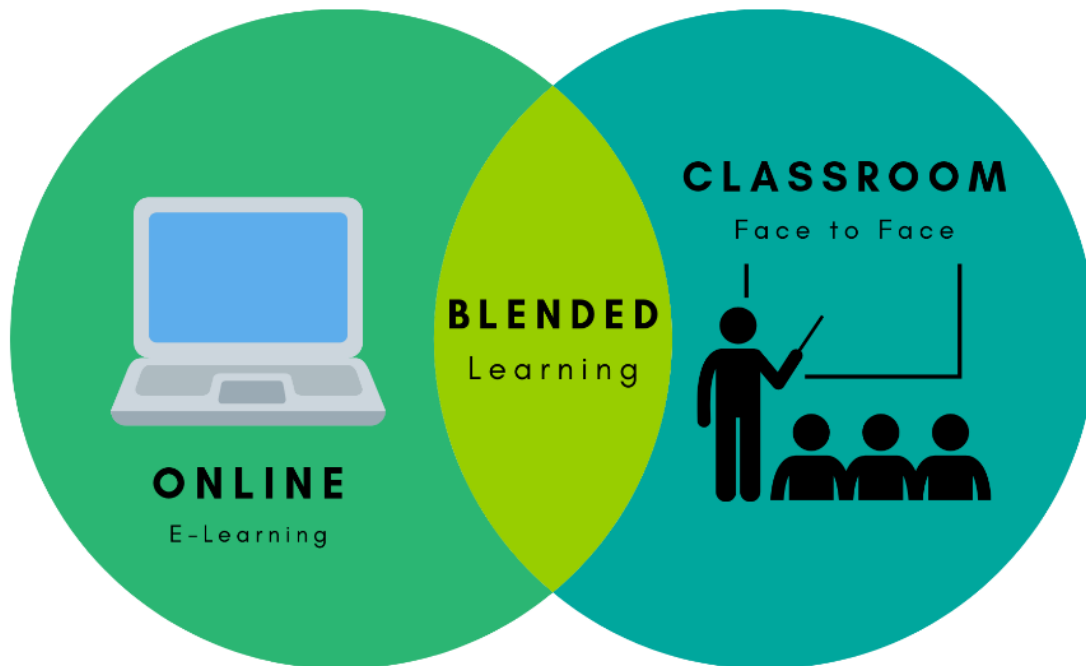
2020-2021

Implementation Date: TBD

DRAFT

November 2, 2020

Plan B with Virtual/Remote Learning Option: Central Middle School Gates County High School



Dr. Barry Williams
Superintendent of Schools

A MESSAGE FROM DR. BARRY WILLIAMS, SUPERINTENDENT GATES COUNTY SCHOOLS

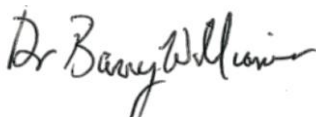
The Gates County Board of Education and the Gates County Public Health Department are fully committed to working together to prepare for the reopening of schools. The COVID-19 pandemic has forced us to take unimaginable steps to ensure that students are able to continue to learn despite the inability to be physically present in classrooms. My administrative team has been in ongoing contact with the Governor's Office, the North Carolina State Board of Education, and North Carolina Department of Public Instruction (DPI) in their development of the StrongSchoolsNC Public Health Toolkit (K-12) for families, students, and local education leaders.

As COVID-19 continues to change our collective landscape, our district will work together to leverage resources, share best practices, and advocate for regulatory flexibility, including state and federal waivers to enable us to provide the best possible programs for all our students. The Board of Education understands the need for schools to have a clear, detailed, and well-organized plan in place before re-opening their doors to teachers, staff, and students. This document is a guide for the school district, parents, students and the community for the 2020-2021 school year under the hybrid Plan B.

There is no one-size-fits-all approach to the operation of schools across our 115 school districts in North Carolina. Gates County Schools has created contingency plans for the schools based on the guiding principles, current planning considerations, and assumptions set forth in this document. These plans are subject to change as public health guidelines are updated and as we continually evaluate the plan.

Please continue to reach out to our office with your questions, feedback, challenges, and success stories. We will continue to provide you with as much clear and timely support and guidance as possible. Together, we will get through this and make sure all our students and their families have what they need to succeed.

Sincerely,

A handwritten signature in black ink that reads "Dr. Barry Williams". The signature is written in a cursive style with a prominent initial "D" and "W".

Dr. Barry Williams, Gates County Superintendent of Schools

ACKNOWLEDGMENTS

The Gates County 2020-2021 School Year Planning Guide was created with guidance and input from the Gates County Schools Administrative Team.

We would like to thank the following leaders for their valuable input:

Sallie Ryan, School Board Member
Dr. Barry Williams, Superintendent of Schools
Tammy Boone, Assistant Superintendent
Jeremy Wright, Director of Student Services
Chante Jordan, Director of Personnel/Exceptional Children
Lola Rountree, Director of Accountability/Testing
John Smith, Director of Technology
Ron Ward, Director of Transportation
Johnny Greene, Director of Maintenance
Sandy Pittman, Finance Officer
Dr. Paula Simpson, Director of Child Nutrition
Cathy Riddick, Administrative Assistant to the Superintendent
Jonathan Hayes, Principal Gates County High School
Kelly Eure, Principal Central Middle School
Kathryn Eure, Teacher/Instructional Coach
Barbara Toti, Teacher/Instructional Coach
Scott Corrente, Assistant Principal
Crystal Owens, Teacher
Joshua Childers, Teacher
Kristen Ward, Data/Testing
Gary Arline, Teacher
Kathryn Eure, Teacher
Barbara Austin, Guidance Counselor
Deirdre House, Teacher
Kristal Brooks, Teacher
Jennifer Dail, Teacher
Rhae Allyn, Teacher
Susan Brown, Teacher
Susan Casper, Assistant Principal
Buffy Edwards, Social Worker
Ann Harrell, CTE Director
Katie Hudgins, Teacher
Renee Kittrell, Teacher
Tamara Simons, Librarian
School Improvement Teams (SIT)
Surveyed Parents and Families

Table of Contents

Overview	6
North Carolina - Plan B	7
GCS Plan B: Blended Learning	8
School Week: AA/BB	8
School Week Schedule: AA/BB	9
Middle School - Plan B	10
High School - Plan B	14
Exceptional Children	19
Parent Contact	19
Tiered Service Delivery Options	19
Instructional Support	19
Ensuring Equity	20
Monitoring for Symptoms	21
Cloth Face Coverings (Facemasks)	23
Social Distancing & Minimizing Exposure	25
Classroom Setup	26
School Buildings - Managing Transitions	27
Technology	28
Devices	28
MiFi	28
Bus Hotspots	28
Google Classroom, Canvas, and Zoom	28
Transportation	29
School Bus Guidelines	29
School Nutrition	30
Cleaning and Hygiene, Sanitizing, and Disinfecting	31
Hand Washing	31
Hand Sanitizer	31
Cleaning and Sanitizing During the School Day	31
Cleaning and Disinfecting After the School Day	32
Cleaning and Disinfecting School Buses	33
Virtual/Remote Learning	34
Personnel Policies and Regulations	35

Technology	35
Workday and Overtime.....	35
Dress Code.....	36
Teleworking	36
Vulnerable Populations	37
Coping and Resilience.....	38
Evaluation of the Instructional Plan.....	39
Resources.....	40
Appendix A: GCS Learning Options Form.....	41
Appendix B: Attestation Ticket	44
Appendix C: StrongSchoolsNC FAQs	46
Appendix D: Albemarle Regional Health Services	61

Overview

On March 14, 2020, Governor Roy Cooper closed all schools in response to the COVID-19 pandemic. At that time, Gates County Schools changed to virtual/remote instruction for all students. With the pandemic increasing in cases throughout the second semester, schools remained closed and virtual/remote instruction became the new normal.

On July 14, 2020, Governor Cooper directed that all North Carolina Public Schools would reopen for the 2020-2021 school year under Plan B. Gates County Schools' administration and staff have worked diligently to establish our instructional, health, and safety plan for the reopening of school in August. The enclosed plan meets the requirements for reopening schools as directed by Governor Cooper with the collaboration of the NC Department of Health and Human Services (NCDHHS), the NC State Board of Education (NCSBE) and the NC Department of Public Instruction (NCDPI).

On July 22, 2020, Dr. Williams, Superintendent of Schools, presented a Plan B, a blended learning plan of face-to-face and virtual/remote instruction with a virtual/remote only option. The board was also given the option of a Plan C, virtual/remote learning for all students. The decision was made by the board in the interest of student and staff well-being during the COVID-19 pandemic, to open schools under Plan C- Virtual/Remote Learning Only for the first nine weeks of schools. During the nine weeks, the status of the pandemic will be evaluated to determine the status of schools beyond the first nine weeks.

On September 14, 2020 and on October 9, 2020, the Gates County Board of Education considered Plan B: Blended Learning with a Virtual/Remote Only Option and Plan A: All Students in School (Face-to-Face). Details of Gates County Schools Plan B is on the following pages. Additionally, Governor Cooper announced on September 17, 2020 that schools have the option to return students in grades K-5 under Plan A beginning October 5, 2020. The status of the pandemic will continue to be monitored and options for teaching and learning will continue to be evaluated.

On October 9, 2020, the Gates County Board of Education voted to remain on Plan C for the 2nd Nine Weeks with a commitment to prepare for Plan A.

On November 2, 2020, the Gates County Board of Education held a work session where Plan A for elementary schools and Plan B for the middle school and high school were presented by district and school administration.

North Carolina - Plan B

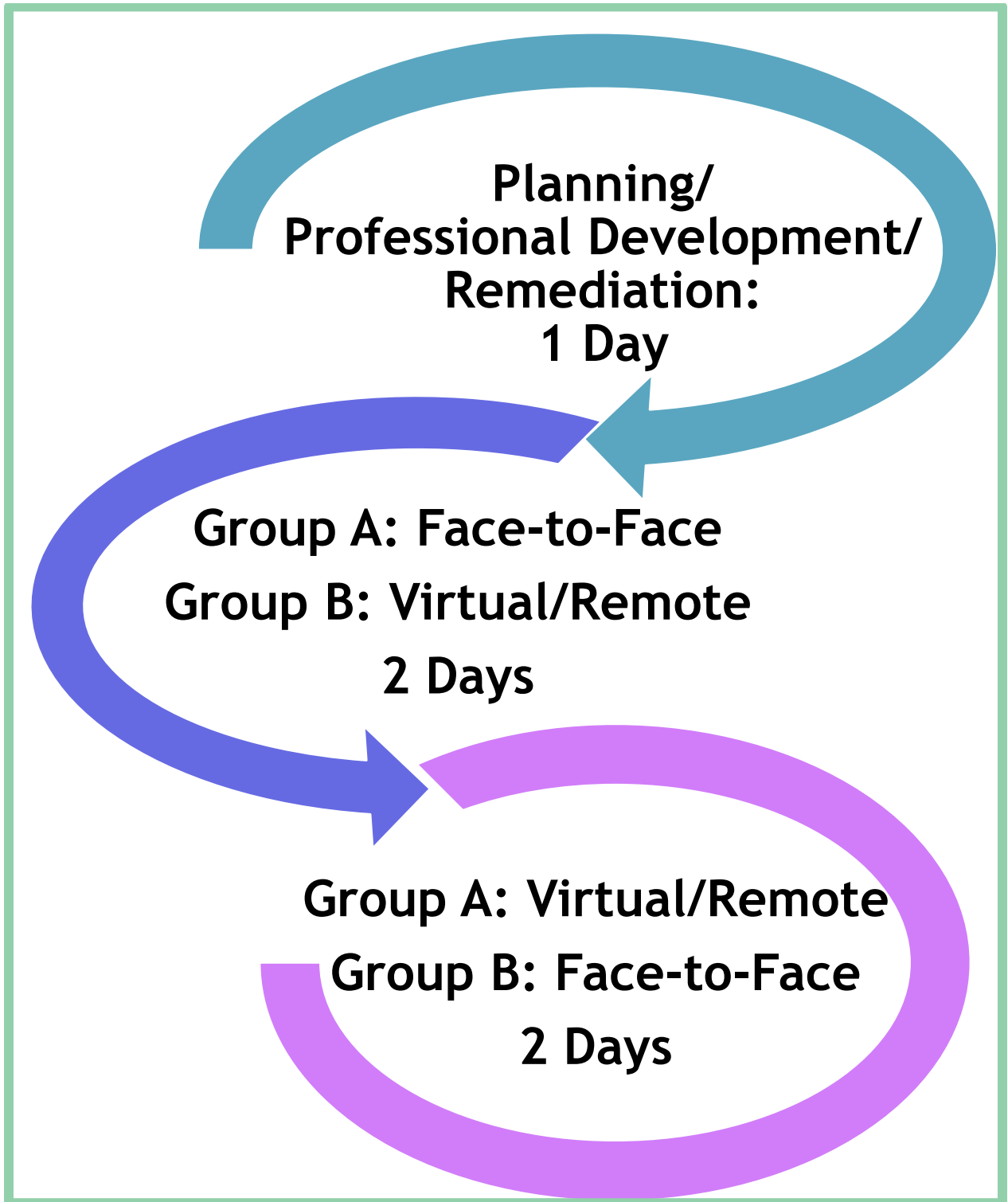
Originally the State Board of Education and DPI developed three plans in which public schools may reopen for the 2020-2021 school year. On July 14, 2020, Governor Cooper announced that schools will reopen under Plan B. School districts do have the flexibility to change to Plan C if virtual/remote learning for all students is determined to be in the best interest of students and staff and/or if COVID-19 metrics significantly worsen in Gates County and surrounding areas. All parents have the option for their students to participate in virtual/remote learning only.

COVID-19 REOPENING PLANS

COVID-19: Reopening Plans	School Facilities and Students	Health Precautions *
PLAN A Minimal Social Distancing	Open All students in school at same time	Enhanced health protocols See DHHS requirements and recommendations
PLAN B Moderate Social Distancing	Open Limit student density in facilities to meet 6 feet social distancing requirements.	Enhanced health protocols See DHHS requirements and recommendations Under Plan B only , schools are required to adhere to all requirements outlined above AND : <ul style="list-style-type: none"> • Ensure sufficient social distancing with at least 6 feet between people at all times in school facilities.
PLAN C Remote Learning	Closed No students in school facilities	N/A All at home

GCS Plan B: Blended Learning

School Week: AA/BB

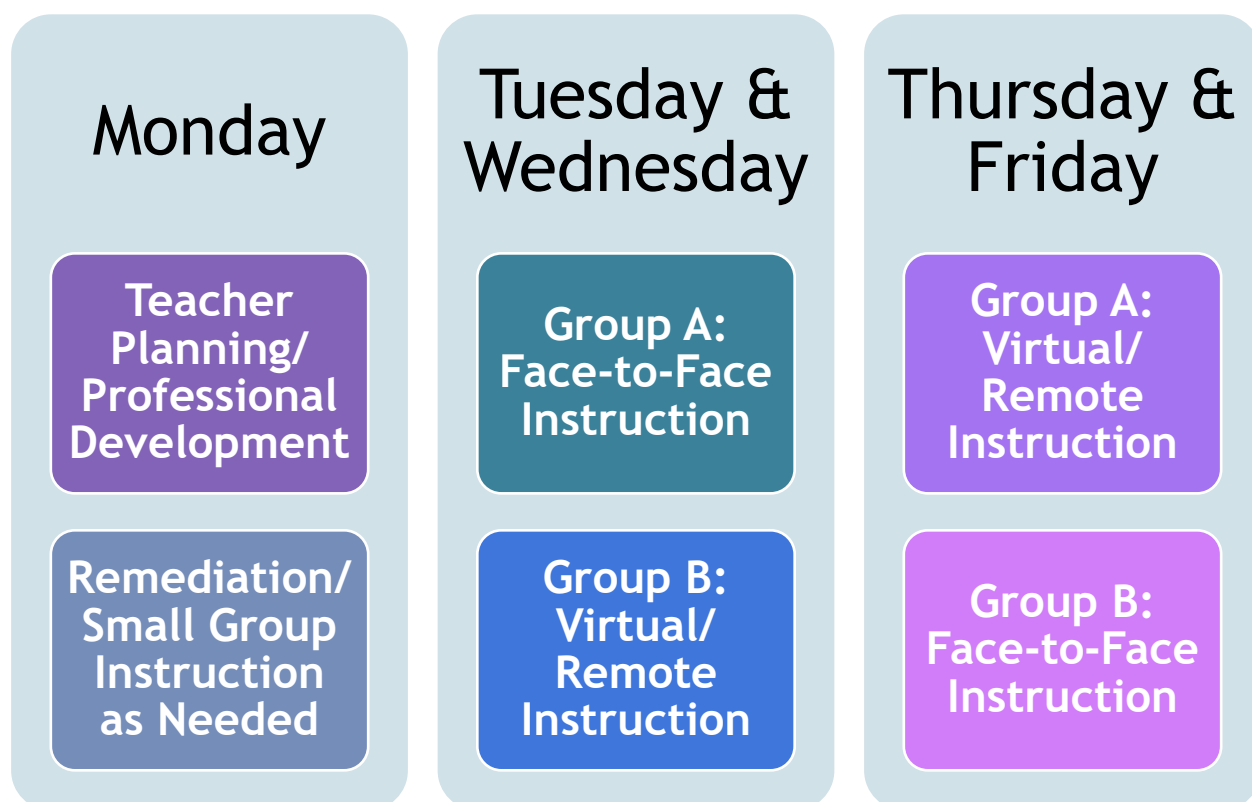


Parents have the option for their children to participate in Virtual/Remote Instruction Only.

School Week Schedule: AA/BB

***Please note that a continued emphasis on mitigation strategies from the CDC, wear face coverings, social distancing, and symptom monitoring are essential to keeping all students and staff safe and healthy during the pandemic.**

Students in grades 6 through 12 will be divided into two groups, Group A and Group B.



Parents do have the option for their children to participate in Virtual/Remote Instruction Only. Virtual/Remote Instruction will be provided four (4) days per week, Tuesday through Friday. Mondays will be for students to work on assignments and teachers may meet with small groups of students virtually for remediation.

Based on the status of COVID-19 and the number of students participating in Face-to-Face Instruction, the above schedule will be reviewed on a regular basis and may be adjusted.

Groups A and B will be defined to allow for approximately 50% of the student population in each group. Principals at each school will communicate with parents to determine who will participate in Plan B or who will opt for virtual/remote instruction only. Principals will then divide their students into two (2) groups, Group A and Group B, to adhere to the above schedule.

Details of Plan B for each level, middle and high, are provided on the following pages.

Middle School - Plan B

Central Middle School



Plan B: Central Middle School

Instructional Design

The following table indicates the type of instruction, Face-to-Face, Virtual/Remote or other designation for each group per day. Virtual/Remote instruction will be provided daily for V/R Only students.

	Group A	Group B	Virtual/Remote Only
Monday	Virtual/Remote	Virtual/Remote	Virtual/Remote
Tuesday	Face-to-Face	Virtual/Remote	Virtual/Remote
Wednesday	Face-to-Face	Virtual/Remote	Virtual/Remote
Thursday	Virtual/Remote	Face-to-Face	Virtual/Remote
Friday	Virtual/Remote	Face-to-Face	Virtual/Remote

Instructional Plan Details

Mondays-Virtual/Remote (School-wide) so that sanitation/deep cleaning can be done. Teachers will be engaged with the following activities; lesson planning, professional development, remedial instruction, small group instruction, tutoring, parent contacts, and paper/pencil packet preparation. Tuesday-Friday students will attend school Face-to-Face or virtual/remote.

State Assessments

Students participating in Virtual/Remote Learning Only will be required to come on campus at the end of the school year to take state assessments.

Monitoring Symptoms in the Morning and Midday

Beginning of the Day: Students will have a signed attestation ticket to enter the building. Students who are car riders will have their temperature taken before getting out of parents' vehicle. If the student does not have a temperature they will enter the building. Students who are school bus riders will have a signed attestation ticket to board the bus. Temperatures will be checked as students enter the building from the bus parking lot. All students will be temperature scanned again at lunch by staff before removing masks to eat lunch.

Lunch and Social Distancing

Students will be brought to the cafeteria by class at 3-5 minute intervals for a grab

and go lunch. Students will be socially distanced by standing on markers on the floor 6 feet apart while waiting in the lunch lines. Students will return to classrooms where they will eat lunch at their assigned desk spaced 6ft apart from one another.

Class Transition and Social Distancing

Two-way travel down hallways, staggered transitions by class and specific places to stand outside classrooms they are entering 6 ft apart from one another.

*Suggestion was made to have teachers transition instead of students from classroom to classroom to limit student movement throughout the building.

Cleaning, Sanitizing, and Disinfecting during the School Day

Teachers and students will sanitize areas in classrooms in between class changes and custodians will sanitize at the end of each day. More specifically, students will be assigned a seat/desk in each classroom and wipe down area before and after class.

Loading Buses and Social Distancing

Students will dismiss by grade level into the gym at staggered times (3 minutes apart), in the gym they will find their bus line and stand on floor markers 6 ft apart from one another until their bus is called to be loaded. One bus will be loaded and dismissed at a time.

Committee Members:

Kelly Eure-Principal

Kathryn Eure-Teacher

Barbara Austin-Guidance Counselor

Deirdre House-Teacher

Kristal Brooks-Teacher

Jennifer Dail-Teacher

Scott Corrente-Assistant Principal

Crystal Owens-Teacher

Joshua Childers-Teacher

Kristen Ward-Data/Testing

Gary Arline-Teacher

**Central Middle School
2020-2021
Tentative Daily Bell Schedule (Plan B)**

8:20am-8:55am Bell rings for buses to unload and students report to class. Tardy bell rings @ 9:00am	Homebase/ Grab-N-Go Breakfast
9:00am-9:45am	First Period
9:55am-10:30am	Second Period
10:40am-11:15am	Third Period
11:25am-12:50pm	Fourth Period Lunch Schedule Includes: 6th Grade Lunch 11:25am-11:50am 7th Grade Lunch 11:55am-12:20pm 8th Grade Lunch 12:25pm-12:50pm
1:00pm-1:35pm	Fifth Period
1:45pm-2:30pm	Sixth Period
Dismissal	6 th Grade-2:30pm 7 th Grade-2:33pm 8 th Grade-2:36pm

High School - Plan B

Gates County High School



Plan B: Gates County High School

Instructional Design

The following table indicates the type of instruction, Face-to-Face, Virtual/Remote or other designation for each group per day. Virtual/Remote instruction will be provided daily for V/R Only students.

	Group A	Group B	Virtual/Remote Only
Monday	Virtual/Remote	Virtual/Remote	Virtual/Remote
Tuesday	Face-to-Face	Virtual/Remote	Virtual/Remote
Wednesday	Face-to-Face	Virtual/Remote	Virtual/Remote
Thursday	Virtual/Remote	Face-to-Face	Virtual/Remote
Friday	Virtual/Remote	Face-to-Face	Virtual/Remote

Instructional Plan Details

Mondays, all students will be remote. Mondays will be utilized for planning, professional development, remediation and/or tutoring in small groups or 1-1 settings. Teachers will teach Group A students Face-to-Face Tuesday and Wednesday. On those days students in Group B and the Virtual/Remote Only group will be provided remote assignments. Teachers may opt to have students participate with the Face-to-Face (F2F) group via Google Meet or Zoom. Teachers will teach group B students Face-to-Face Thursday and Friday. On those days, Thursday and Friday, students in Group A and the Virtual/Remote Only group will be provided remote assignments. Teachers may opt to have students participate with the F2F group via Google Meet or Zoom. Mask breaks will be provided at the discretion of the teacher. Students should stay 6 feet apart and the mask break should be no longer than 5 minutes. Students will sit in assigned seats in each class.

State Assessments

Students participating in Virtual/Remote Learning Only will be required to come on campus at the end of the school year to take state assessments.

Monitoring Symptoms in the Morning and Midday

Beginning of the Day: Students will have a signed attestation ticket to board the school bus and/or enter the building. Temperatures will be checked as students enter the building from the bus parking lot. Temperatures will be checked at checkpoints in the parking lot for car riders and student drivers. Individuals will be set up where students are dropped off by parents at the sidewalk between the main building and the data center, at the sidewalk that goes between the PAC & Art Building, and between the PAC and Football Field to ensure all entrances are covered. There will be an individual in the front lobby checking temperatures of staff, students and other visitors as they enter the building's main entrance.

Lunch and Social Distancing

Students eat lunch in their 2nd block class. Those students who will eat a cafeteria meal would go to the cafeteria to pick up their lunch and return to their classroom. Arrows will be placed in the cafeteria spaced 6-ft apart so that students know where to stand.

Class Transition and Social Distancing

One-way hallways will be used to minimize students crossing paths. Directional signs will direct students which way to go down the hallway. Arrows will be placed 6-ft apart throughout the building. Teachers will be in the hallways to remind students to stay 6-ft apart. We will make the class exchange time 10-minutes to accommodate the one-way hallways. Signage on the walls will remind students to practice social distancing and stay 6 feet apart.

Cleaning, Sanitizing, and Disinfecting during the School Day

Teachers will be provided cleaners and hand sanitizer in order to have students clean and sanitize as needed. An announcement will be made with 5 minutes left in class to have everyone sanitize. Teachers will provide students with paper towels, then spray the desk with the solution. Custodians will wipe down touch points between classes. Classrooms will be cleaned and sanitized each day following Face-to-Face instruction.

Loading Buses and Social Distancing

Drivers will seat students beginning at the back of the bus. Drivers will unload their bus starting with the front seat and working to the back of the bus. Drivers will unload their bus as they enter the bus parking lot. Only the front bus will unload their bus. (If this method doesn't work, we can have the buses park and unload starting with the bus closest to the building.) Once the bus has unloaded they will park and sanitize their bus. The next bus will drive forward to unload their students.

Bus riders, car riders and drivers will be released at 3:10 and will follow the one-way hallways to exit the building and go to their appropriate location. Car Riders will go to the cafeteria in order to maintain social distancing. A staff member in the parking lot will radio a staff member in the cafeteria to send out the students for the next car rider.

Committee Members:

Rhae Allyn-Teacher
Susan Brown-Teacher
Susan Casper-Assistant Principal
Buffy Edwards-Social Worker
Ann Harrell-CTE Director
Jonathan Hayes-Principal

Renee Kittrell-Teacher
Tamara Simons-Librarian
Barbara Toti-Teacher
Katie Hudgins-Teacher

**Gates County High School
2020-2021
Tentative Daily Schedule-COVID Plan B**

9:50 a.m.	Buses Unload beginning at 9:50
10:00 a.m. to 11:10 a.m.	First Period
11:20 a.m. to 12:50 p.m.	Second Period and Lunches
1:00 p.m. to 2:00 p.m.	Third Period
2:10 p.m. to 3:10 p.m.	Fourth Period

Time to go to the Cafeteria for Lunch

Baker - Planning
L. Perry - 11:20
D. Perry - 11:20
K. Greene - Planning
D. Hudson 11:25
R. Badgett - 11:25
Kittrell - 11:30
M. Hudson - 11:30
G. Boone - 11:35
D. Vaughan - 11:35
Seebo - Planning
Flight School - 11:35
Townsend 11:40
Blystone - 11:40
Clark - 11:45
O. Williams - 11:45
Allyn - Planning
Cooper - 11:50
Boyce - Planning
Rawls - Planning
Brown - 11:50
Hawks - 11:55
Farmer - 11:55
M. White - 12:00
P. Smith/Olson - 12:00
Brinkley - 12:05
Wiant - 12:05
Matthews - 12:10
Hobbs - Planning
R. Perry - 12:10
Boone, A. - 12:15
Russell - Planning
Toti - 12:15
Stiltner - 12:20
Belch - 12:20
Biggy - 12:25
Harrell - 12:25

Exceptional Children

The Exceptional Children's Department will follow these procedures to provide continuity of instruction for students with special needs.



Parent Contact

Case Managers will:

- Identify if a meeting is required to determine eligibility for compensatory education as appropriate for children who qualify for services due to impact of COVID-19.
- Develop contingency plan or addendum as needed.
- Schedule individualized evaluations and assessments required for service delivery and program planning.

Tiered Service Delivery Options

The following options will be considered for each child:

- A combination of virtual/remote and face-to-face options for access to related services.
- Virtual social-emotional support for all students in the Exceptional Children's program.
- Students participating in the inclusion and resource settings will follow the schedule or guidelines for Plan B.

The final service delivery option will be based on the individual need of the student.

Instructional Support

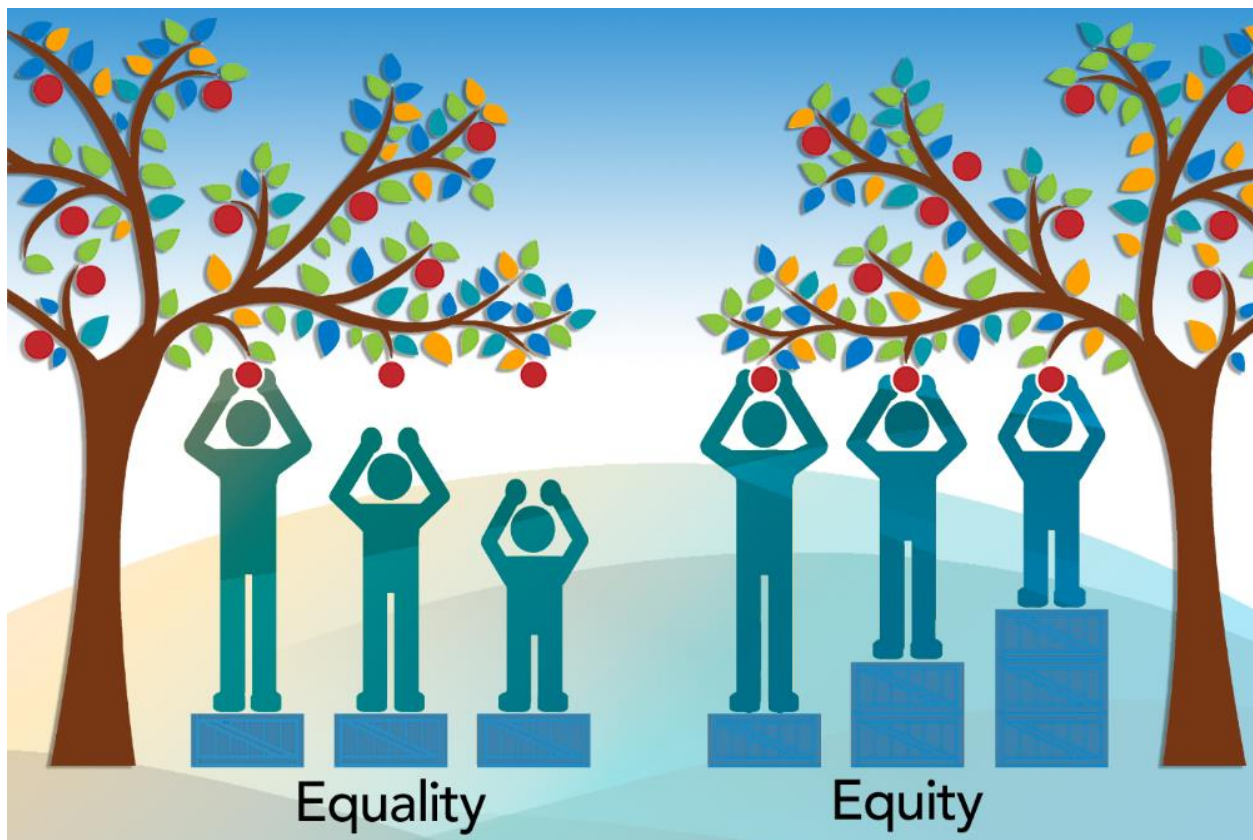
- 1:1 personnel will continue to support students.
- Teacher assistants will be available to aid instruction as required.

Ensuring Equity

Gates County Schools is committed to providing equitable educational opportunities to all students. We will continue to provide guidance and support to our schools to diminish the effects of COVID-19 on our students and staff to the greatest extent possible.

To ensure equity during reopening we will:

- Prioritize the physical and social-emotional needs of particularly vulnerable students. Ensure safety, belonging, and mental health as a foundation for learning.
- Continue to identify and supply internet access through hotspots to families and communities in need.
- Identify students experiencing learning gaps now and develop strategies to mitigate the longer-term impact of school closures on these students.

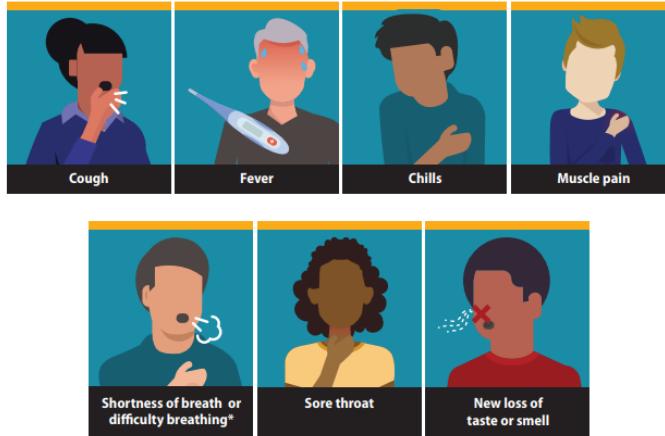


Monitoring for Symptoms

COVID-19 is mostly spread by respiratory droplets released when people talk, cough, or sneeze. The virus may spread to hands from a contaminated surface and then to the nose or mouth, causing infection.

Symptoms of Coronavirus (COVID-19)

Know the symptoms of COVID-19, which can include the following:



Symptoms can range from mild to severe illness, and appear 2-14 days after you are exposed to the virus that causes COVID-19.

***Seek medical care immediately if someone has emergency warning signs of COVID-19.**

- Trouble breathing
- Persistent pain or pressure in the chest
- New confusion
- Inability to wake or stay awake
- Bluish lips or face

This list is not all possible symptoms. Please call your medical provider for any other symptoms that are severe or concerning to you.



cdc.gov/coronavirus

Students and staff should stay home if they are experiencing any COVID-19 symptoms, have recently had close contact with a person with COVID-19, or have tested positive for COVID-19.

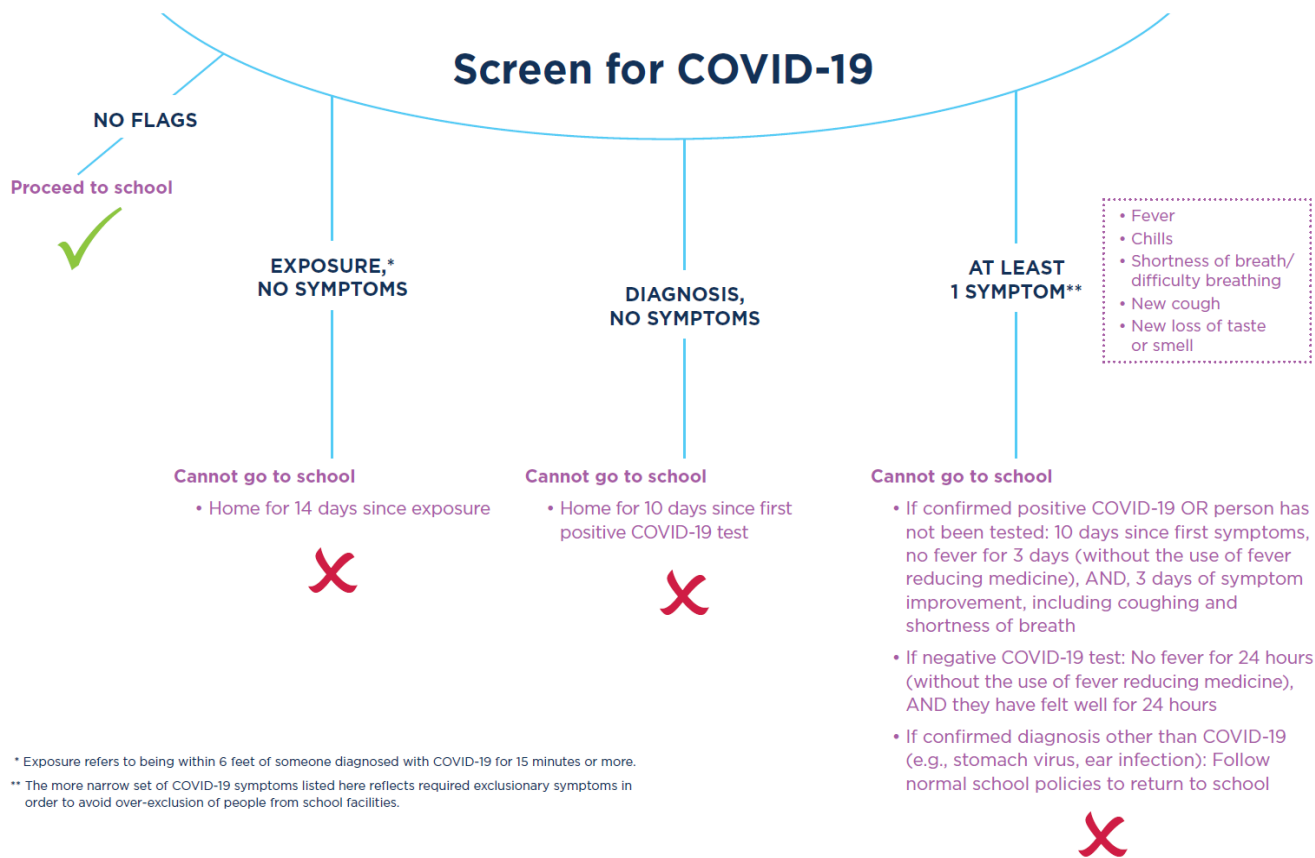
Symptom Screening will be conducted for any person entering the school building, including students, teachers, staff, and visitors. Screening will be provided at the school entrance or prior to boarding a school bus. Temperature screenings are a required component of symptom screening and will be performed with a touchless thermometer. Individuals with a temperature of 100°F or higher is considered a positive screening.

In the event that a student or staff member has a positive screening, the school district personnel will follow the Positive Screening Protocol Checklists in the Reference Guide for Suspected, Presumptive, or Confirmed Cases of COVID-19 (K-12) published by the NC Department of Health and Human Services.

The screening flow chart is illustrated below:

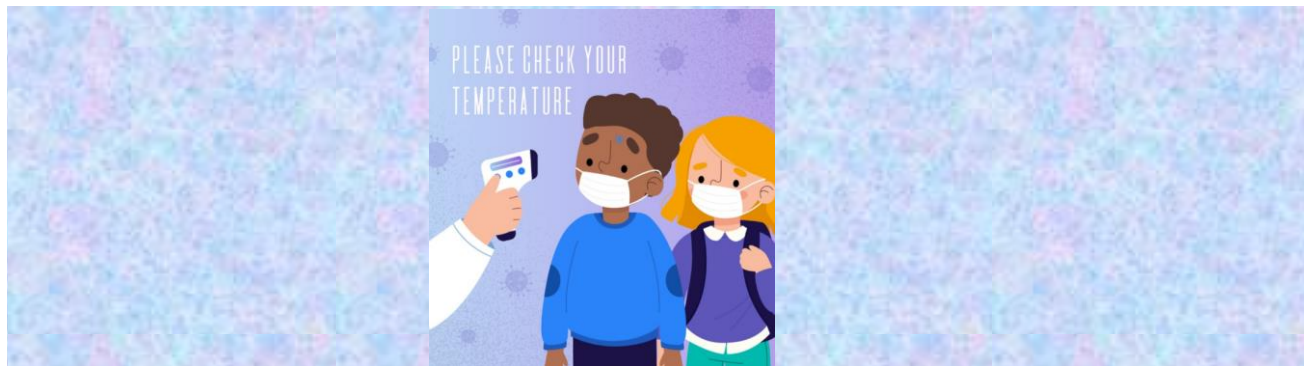


Screening Flow Chart



* Exposure refers to being within 6 feet of someone diagnosed with COVID-19 for 15 minutes or more.

** The more narrow set of COVID-19 symptoms listed here reflects required exclusionary symptoms in order to avoid over-exclusion of people from school facilities.



Cloth Face Coverings (Facemasks)

There is growing evidence that wearing face coverings help reduce the spread of COVID-19, especially for those who are sick but may not know it. Cloth face coverings are not surgical masks, respirators (“N-95s”), or other medical personal protective equipment (PPE).



Wear a cloth face cover

All students, staff members and visitors must wear a cloth face covering (facemask) in school buildings and on school buses.

Facemask Do's and Don'ts

For Healthcare Personnel

When putting on a facemask

Clean your hands and put on your facemask so it fully covers your mouth and nose.



DO secure the elastic bands around your ears.



DO secure the ties at the middle of your head and the base of your head.

When wearing a facemask, don't do the following:



DON'T wear your facemask under your nose or mouth.



DON'T allow a strap to hang down. DON'T cross the straps.



DON'T touch or adjust your facemask without cleaning your hands before and after.



DON'T wear your facemask on your head.



DON'T wear your facemask around your neck.



DON'T wear your facemask around your arm.

When removing a facemask

Clean your hands and remove your facemask touching only the straps or ties.



DO leave the patient care area, then clean your hands with alcohol-based hand sanitizer or soap and water.



DO remove your facemask touching ONLY the straps or ties, throw it away*, and clean your hands again.

*If implementing limited-reuse: Facemasks should be carefully folded so that the outer surface is held inward and against itself to reduce contact with the outer surface during storage. Folded facemasks can be stored between uses in a clean, sealable paper bag or breathable container.

Additional information is available about how to safely put on and remove personal protective equipment, including facemasks:

<https://www.cdc.gov/coronavirus/2019-ncov/hcp/using-ppe.html>.



CS 316480A June 2, 2020 11:30 AM

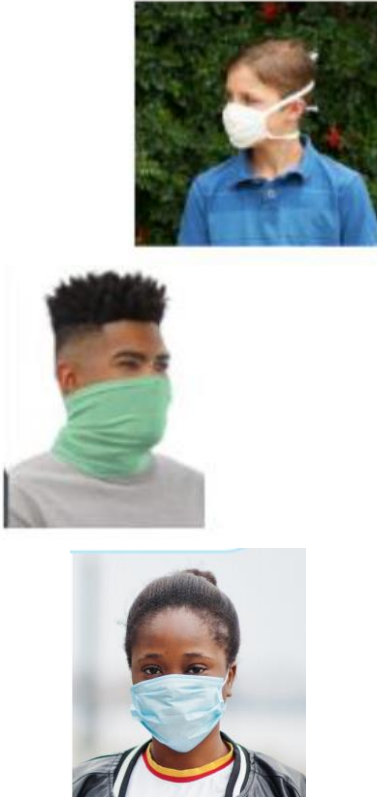

[cdc.gov/coronavirus](https://www.cdc.gov/coronavirus)

Each student and staff member will be provided with a cloth facemask at the beginning of the school year. If a student or staff member forgets his/her facemask, or a visitor does not have a facemask, a new cloth facemask or disposable facemask will be provided.

Cloth face coverings **should not** be placed on:

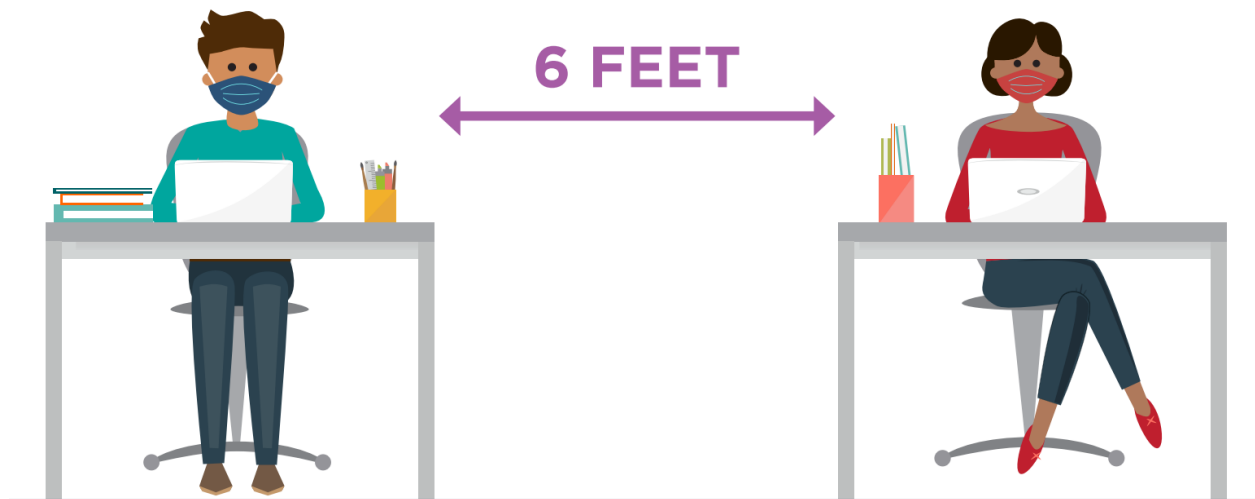
- Anyone who has trouble breathing or is unconscious.
- Anyone who is incapacitated or otherwise unable to remove the face covering without assistance.
- Any child under the age of 2 years old.

There are many types of facemasks that may be worn at school. Below is an illustration of examples of acceptable and unacceptable facemasks:

Examples of Acceptable Facemasks	Examples of Unacceptable Facemasks
 <p>The left column displays three examples of acceptable facemasks. At the top is a young boy wearing a white surgical mask. Below that is a young man wearing a green cloth mask. At the bottom is a young woman wearing a blue surgical mask.</p>	 <p>The right column displays four examples of unacceptable facemasks. At the top left is a black balaclava. To its right is a white plastic mask. Below the balaclava is a black crow mask. At the bottom right is a brown animal mask.</p>

Social Distancing & Minimizing Exposure

During the school day, students and staff are required to practice social distancing to minimize the risk of exposure to COVID-19. Social distancing is a key tool to decrease the spread of COVID-19. Social distancing means keeping space between yourself and other people.



StrongSchoolsNC: Public Health Toolkit (K-12) Interim Guidance • Published June 8, 2020; Updated July 14, 2020

4

The schools will mark six (6) feet of spacing on floors, seats, and desks to remind students and staff to stay six (6) feet apart in waiting and reception areas, in lines and at other times when they may congregate such as lunch, recess, or class change. Specific designations established are:

- Plexiglass physical barriers have been added for extra protection at reception desks, library check-out stations, and similar areas.
- Furniture, such as desks or seating in classrooms, break rooms, and reception areas, have been arranged so that students, teachers, staff and visitors are separated from one another by at least 6 feet (see **Classroom Setup**).
- The sides of hallways will be designated as one-way, with directional reminders on the walls and/or floor.
- The designation of entrance and exit pathways for classrooms and restrooms with directional reminders on the walls and/or the floors has been done to reduce the chance that people meet face-to-face.

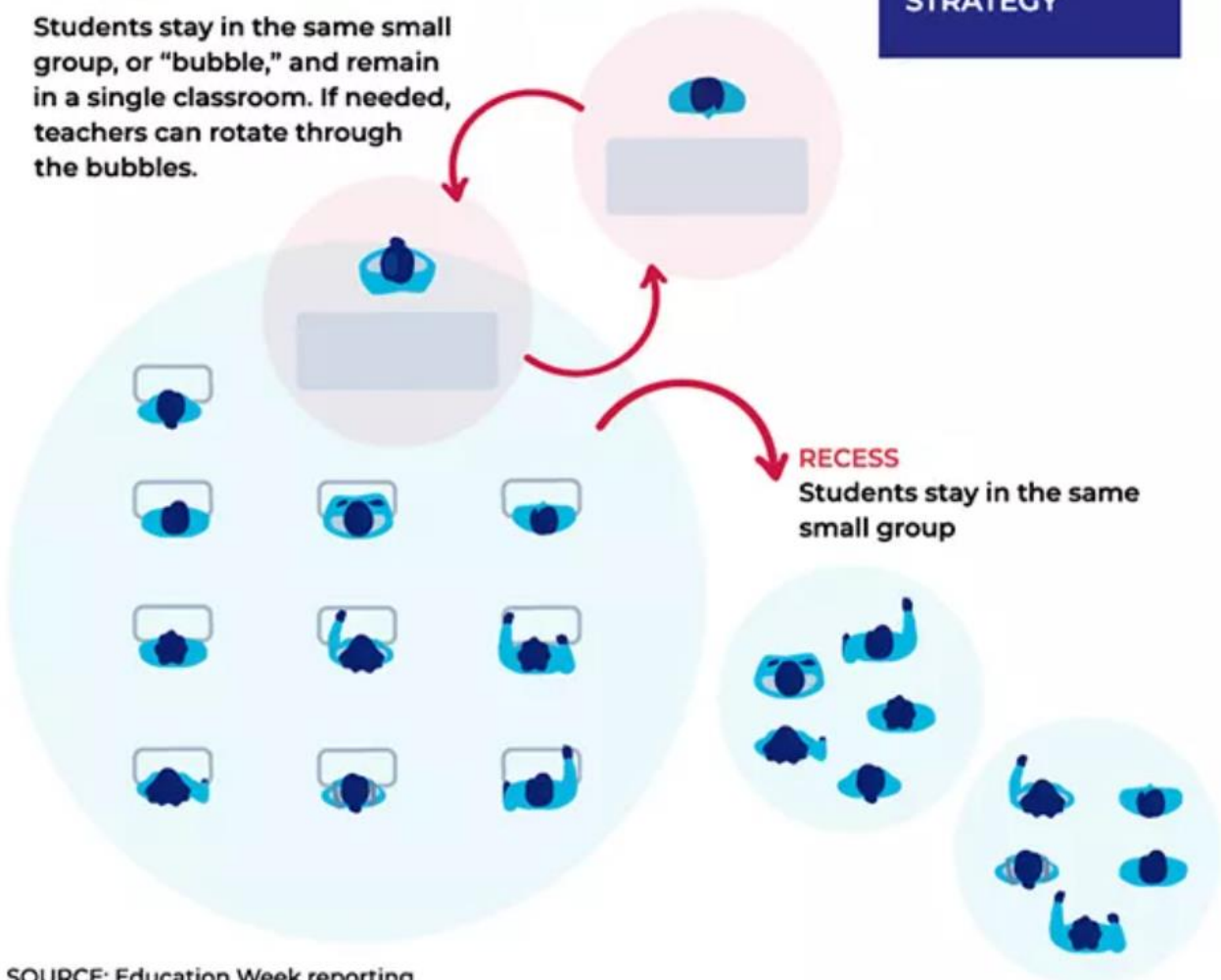
Through announcements and signage, students, staff, and visitors will be frequently reminded to stay at least 6 feet apart from one another.

Classroom Setup

Classrooms must be set up to ensure that students are social distancing with a least six (6) feet of distance between each student and staff. The size of the classrooms is the main reason that student numbers must be limited. Extra desks and chairs will be removed or marked as unavailable to assist students and teachers with social distancing. Below are diagrams indicating possible classroom setups:

Limiting Exposure and Transmission

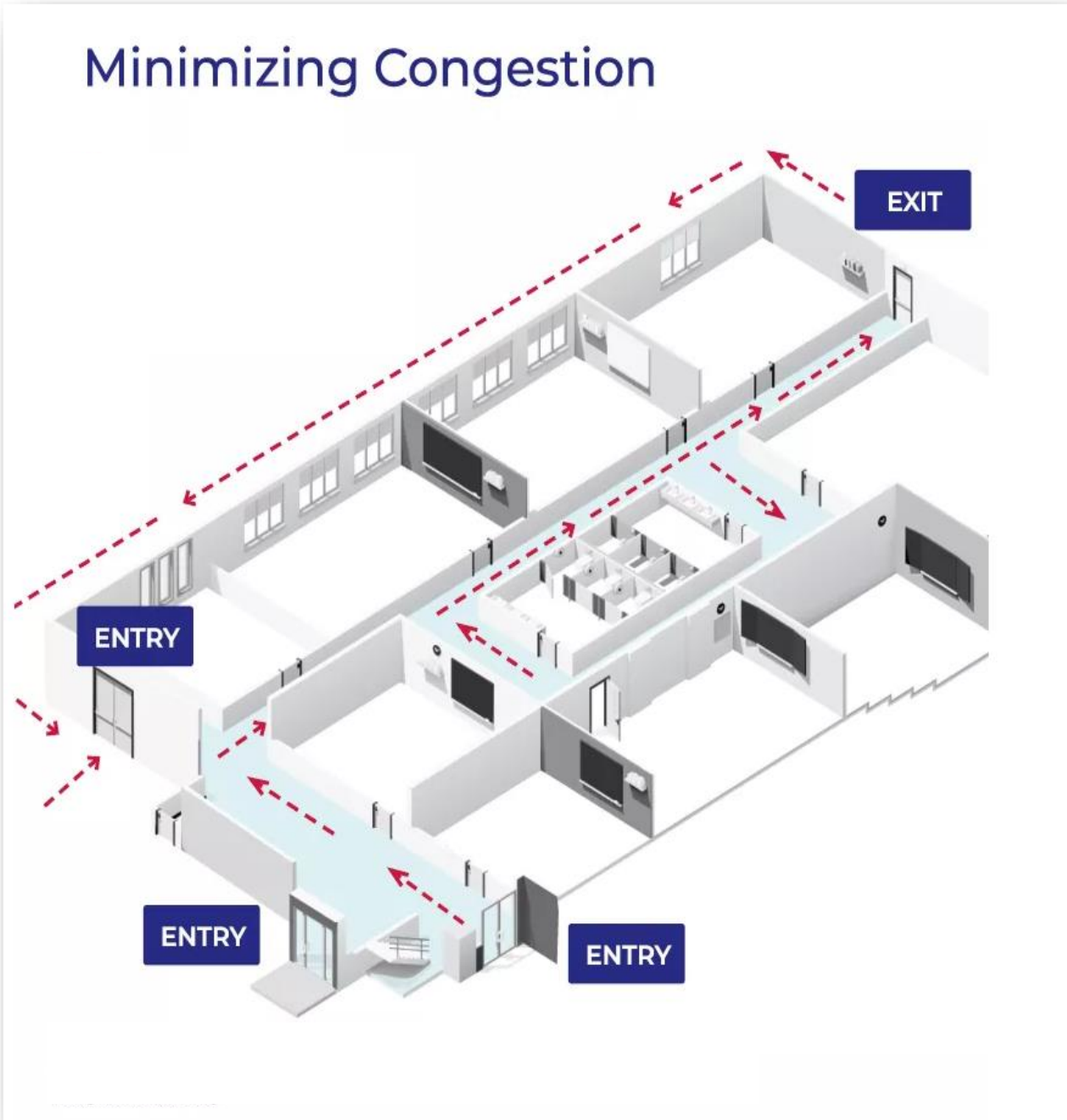
Students stay in the same small group, or "bubble," and remain in a single classroom. If needed, teachers can rotate through the bubbles.



SOURCE: Education Week reporting

School Buildings - Managing Transitions

Schools will establish transitioning pathways marked with signage to ensure social distancing as students and staff move throughout the building. Below is a diagram indicating the type of plans each school will include in their social distancing protocol:



Technology

Teachers use a variety of technology modalities to provide quality instruction for their students. For remote instruction, technology can bridge the gap from school to home.

Devices

While Gates County Schools is not a one-to-one school district, technology inventory is growing and a limited number of Chromebooks and iPads will soon be available for students who do not have their own device. Devices will be used to assist students with virtual/remote instruction.



MiFi

Internet connectivity is an issue that can impede virtual/remote learning. In Gates County, there are areas that do not have internet availability and/or there are families who do not have internet service. As a solution to this issue,



Gates County Schools has investigated several options, including MiFi units by Kajeet. Kajeet MiFi's are portable Internet hotspots that students can take home and use to connect to the Internet. Currently, we are in the process of determining how many devices we will need to deploy and we will purchase additional units as needed to support our virtual/remote learning initiative.

Bus Hotspots

In addition to individual MiFi's, we have purchased larger hotspots that are mounted on buses. These buses will be taken to a variety of communities at specified times for multiple households to connect to the internet for virtual/remote learning purposes.

Google Classroom, Canvas, and Zoom

Google Classroom, Canvas, and Zoom are three of the main methods for teachers to remotely connect with students. Through these online programs, teachers can interact with students in real time and they can provide assignments, lessons, and videos that students can access at any time.



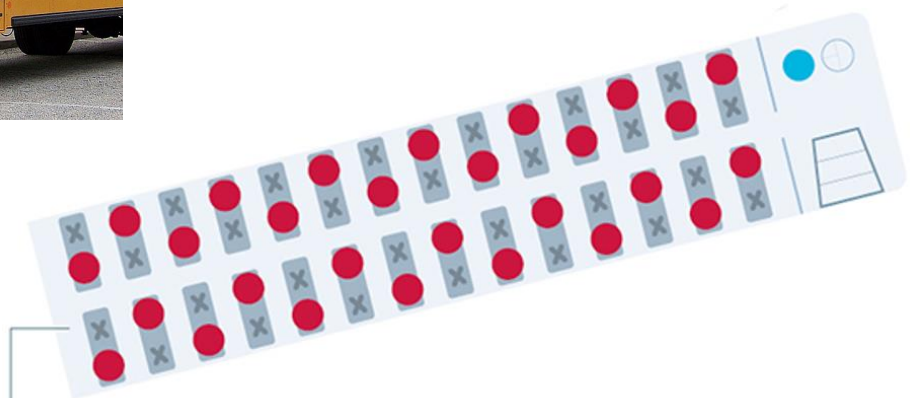
See the **Virtual/Remote Learning** section for more details.

Transportation

School buses will run normal routes with the reopening of schools. However, buses will be limited to one student per seat.



How Many Students Can Ride the Bus?



WITH FACEMASKS:
One Student per Seat

School Bus Guidelines:

- All students in grades K-12 and all staff must wear cloth face coverings when they are on a school bus.
- Students must present the bus driver with their signed attestation ticket each morning. Riders' temperature must be below 100 degrees F.
- No more than one passenger can be seated per school bus seat (exception: family members may share one seat.)
- School buses will be cleaned and disinfected daily (see **Cleaning and Hygiene, Sanitizing, and Disinfecting**).
- Students will not be present when a school bus is being cleaned.
- Cleaning and disinfecting products will not be stored on a school bus.
- Cleaning and disinfecting will be conducted prior to each morning run and after each set of runs.
- Hand sanitizer will be provided on each school bus to support healthy hygiene behaviors for safe use by staff and students.

School Nutrition

On August 31, 2020 the extension of the Summer Food Service Program (SFSP) was provided by the United States Department of Agriculture (USDA), allowing all students to eat free of charge through December 31, 2020. On October 9, 2020 the Food and Nutrition Service (FNS) of the USDA issued COVID 19: Child Nutrition Response #59_EXTENSION allowing the SFSP and the Nation School Lunch Program (NSLP) Seamless Summer Option to continue to operate through June 30, 2021. With this extension, all Gates County Students are allowed to eat free of charge.



Under Plan B, the school meal distribution plan will be developed when the Student Learning Option forms have been submitted and the schools are able to determine the number of meals that will be served in school and how virtual/remote students will receive meals.

The 2020-2021 Free and Reduced Priced Meals Household Application is now available on the district website, at the central office, and at all schools. It is imperative that parents complete an application for students to qualify for free and reduced meals and to be eligible for other benefits provided as a result of the pandemic.



Cleaning and Hygiene, Sanitizing, and Disinfecting

Hand Washing

Due to the nature of school activities, students and staff need to be able to wash their hands or use hand sanitizer throughout the day to minimize the transmission of viruses, germs, and bacteria. Many classrooms do not have sinks where students and staff would be able to wash their hands. Schools will provide soap in all restrooms and at all sinks. Students and staff will utilize handwashing with soap and water for at least 20 seconds. Reinforcement of handwashing will also be done during key times such as: before and after eating food; after using the restroom; after blowing your nose, coughing, or sneezing; after touching objects with bare hands which have been handled by other individuals.

Handwashing
is critical to avoiding the spread of COVID-19



NCASA "Ensuring student success through visionary leadership"

Hand Sanitizer

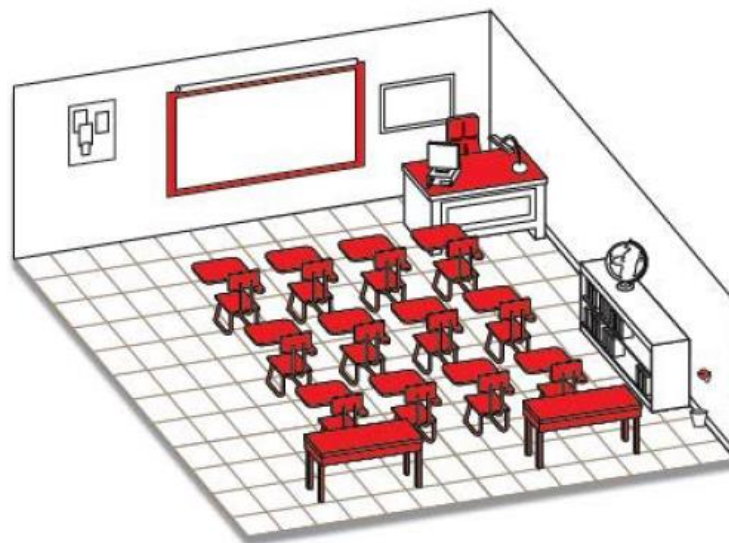
Hand sanitizer will be provided for use throughout the schools. Hand sanitizer stations are throughout the common areas of the buildings such as the main office area, hallways, cafeteria, and entryways. The sanitizer stations are touch-free to reduce the transmission of germs and viruses. In each of the classrooms, individual hand sanitizer dispensers are mounted to the wall and/or on the teachers' desk.



Cleaning and Sanitizing During the School Day

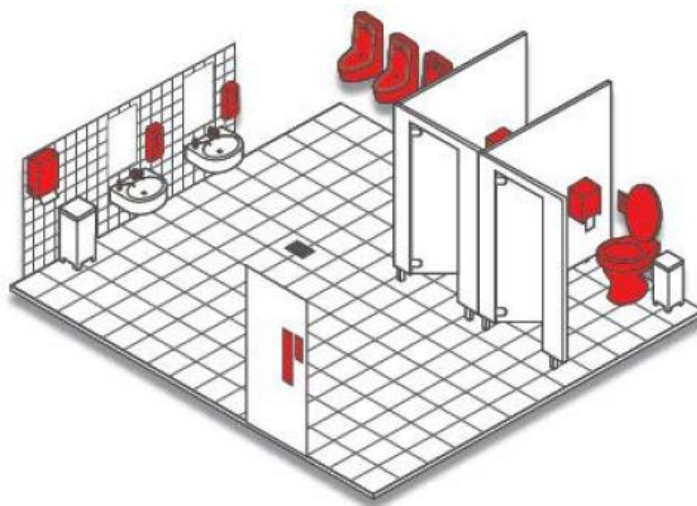
Before, during, and after the school day, custodians will perform ongoing and routine environmental cleaning and sanitizing of high-touch areas (e.g., door handles, faucet handles, toilet handles, light switches, desks, tables, chairs, cafeteria tables, kitchen counters, carts) with an EPA approved disinfectant for SARS-CoV-2 (the virus that causes COVID-19). School staff will clean and disinfect during the school day and during workdays.

Below is an illustration of key points for cleaning and disinfecting during the school day:



Classrooms:

- telephones / computers / electronics
- desks / tables
- switches
- door handles
- chairs
- pencil sharpener / metal surfaces



Restrooms:

- door handles
- switches
- dispensers, paper towel holders
- bathroom handles, toilet flush, shower control, taps
- toilet seats, splash walls

Cleaning and Disinfecting After the School Day

Classroom and cafeteria surfaces will be cleaned and disinfected at the conclusion of each school day. Touch points in common areas and bathrooms will be cleaned and disinfected throughout the day. An electrostatic sprayer with a nozzle that delivers a disinfecting solution to the front, back, and sides of surfaces will be used to clean group areas bi-weekly. This system provides superior coverage and is effective in use against SARS-CoV-2, the virus that causes COVID-19, as well as other viruses and bacteria. The system will be used in addition to normal cleaning procedures and will only be utilized when the school day is over.

Cleaning and Disinfecting School Buses

School buses will be used to transport students to and from school. School buses may be used to transport meals to students on virtual/remote learning. Because individuals touch multiple places on the bus such as the handrails getting on and off the bus, the seats, the seat backs, and the windows, these areas will be cleaned after each run.



To ensure CDC recommended guidelines for sanitizing are followed on the school buses, the most efficient and effective method is to use Portable Sanitizer Foggers. Similar to the electrostatic sprayer, the Portable Sanitizer Fogger can cover multiple surfaces but it is portable as a backpack system that staff members can wear as a backpack and walk through the buses easily to sanitize each area of the bus. The Portable Sanitizer Fogger for each school will allow the transportation department to quickly and efficiently sanitize all areas of the school buses. This process will be done at the end of each route.

Virtual/Remote Learning

Virtual/Remote Instruction will be provided two (2) days per week as part of the blended learning plan, Plan B, or four (4) days per week, Tuesday & Wednesday and Thursday & Friday for students who choose to participate in virtual/remote learning only. Mondays will be virtual/remote for all students and will allow students to work on assignments. Details of the Remote Learning Plan and each school's Remote Learning Handbook can be found in the Plan C Document on the district website and each school's website.



Personnel Policies and Regulations

As the school district continues to operate schools, for the 2020-2021 school year, under an alternate plan due to COVID-19, a few select policies and procedures of Gates County Schools are highlighted and defined for employees.

Technology

In regard to remote instruction, the following policies provide guidance for employees when working with students and parents through a remote environment: Policy 7320-Technology Responsible Use, 7323-Use of Personal Technology to Conduct School Business, and 7335-Employee Use of Social Media. These policies can be accessed online on the Gates County Schools website or through the following link:

<https://boardpolicyonline.com/?b=gates>.

Workday and Overtime

The work schedule for employees will be as follows during Plan B:

11 Month & 12 Month Full-Time Employees Monday - Friday: 8 a.m. to 4:30 p.m.		10 Month Full-Time Employees Monday - Friday: 8 a.m. to 3:30 p.m.
Directors	Secretaries	Teachers
Coordinators	Bookkeepers	Instructional Coaches
Supervisors	Finance	School Counselors
Specialists	Department	Librarians
Technology Staff	Maintenance	Teacher Assistants
Principals	Mechanics	School Nurses
Assistant Principals	Custodians	School Resource Officer
Athletic Director		Social Worker
School Bus Drivers		School Nutrition Staff
Regular bus route times.		Regular Schedule Cafeteria staff will report as assigned by the Director of School Nutrition.

All employees are expected to be present during all working hours. If an employee is not present, the appropriate leave must be taken. The board of education discourages overtime work by non-exempt employees. Any overtime work must be approved prior to working by the employee's direct supervisor. Please refer to Policy 7500 for further information. The policy can be found at <https://boardpolicyonline.com/?b=gates>.

Dress Code

Policy 7340 and Regulation 7340-R define the expectations for employee dress. Below are three excerpts from the policy and regulation on dress code. The entire policy and regulation can be accessed at <https://boardpolicyonline.com/?b=gates>.

The board believes that the appearance and the conduct of its faculty are of supreme importance in establishing a positive image for education in the community and for presenting a good example for students. Therefore, the board affirms its expectation that all personnel will be professionally, neatly and appropriately attired for the work to be done.

Administrative and supervisory personnel shall set a good example in personal appearance and good manners and shall encourage and expect employees to dress in accordance with the board's expectations.

All employees, while on duty or in attendance at school functions, should dress professionally and appropriately for their job duties and responsibilities.

Teleworking

During the COVID-19 pandemic while Gates County Public Schools is offering Remote Instruction Only, there may be situations where teleworking is an option for some employees. The Teleworking Policy-7503 is a new policy adopted in May of 2020. The policy may be found in its entirety on the school district website at <https://boardpolicyonline.com/?b=gates>. After reviewing the policy, if an employee feels they may be qualified to request to telework, the employee should notify their principal or direct supervisor who will then contact the Director of Human Resources for further information and directions.

Vulnerable Populations

Individuals who are considered high-risk for severe illness due to COVID-19 include people who:

- Are 65 years of age or older
- Have a high-risk condition that includes:
 - chronic lung disease or moderate to severe asthma
 - heart disease with complications
 - compromised immune system
 - severe obesity - body mass index of 40 or higher
 - other underlying medical conditions, particularly if not well controlled, such as diabetes, renal failure or liver disease

As a school district, we are committed to providing extra securities for our vulnerable population. To do so, we will:

- ✓ Review all current plans such as Individual Healthcare Plans, Individualized Education Plans or 504 plans for accommodating students with special healthcare needs and update their care plans as needed to decrease their risk for exposure to COVID-19.
- ✓ Accommodate students and/or their families, teachers, and staff with documentation of being at high-risk from COVID-19 and provide alternative learning arrangements or work re-assignments if feasible.



Coping and Resilience

The outbreak of COVID-19 can be stressful for many. Fear and anxiety about a disease can be overwhelming and cause strong emotions in adults and children. Schools can play an important role in helping students and staff cope and build resilience to support the well-being of the school community.

School counselors can provide teachers, staff, families, and students (if age-appropriate) with information on how to access resources for mental health and wellness, such as 211 and Hope4NC Helpline 1-855-587-3463, as well as other resources.

As a school district, we will focus on mental health as well as physical health by:

- Encouraging teachers, staff, students, and families to talk with people they trust about their concerns about COVID-19 and how they are feeling.
- Supporting teachers, staff, students and families eating healthy, exercising, getting sleep, and finding time to unwind.
- Encouraging teachers, staff and students to take breaks from watching, reading, or listening to news stories about COVID-19, including social media, if they are feeling overwhelmed or distressed.



Evaluation of the Instructional Plan

As we have all witnessed since the March 14, 2020 announcement that NC schools would be closed due to the COVID-19 Pandemic, the impact of the virus has been widespread. Additionally, the virus impact has increased, flattened, and then increased again. The CDC, NCDHHS, the Governor's Office, and NCDPI constantly monitor the virus impact and provide guidance for our schools.



With that being said, we know that the situation is fluid and can change at any time. We will continually monitor our instructional plan along with the impact of the virus on Gates County and will adjust our plan as needed with appropriate notice time for parents, students, and staff.

Our goal is to provide a quality education for our students in a safe and healthy learning environment. As we work through the pandemic together, we value the input and feedback from all and encourage you to share any concerns, positives, or negatives that can be helpful in evaluating our plan.

Thank you for your support, patience, and grace as we move forward with educating our students in the 2020-2021 school year.

Resources

North Carolina Department of Health and Human Services

<https://covid19.ncdhhs.gov/guidance#schools>

*Please Note: NCDHHS requirements are updated daily.

StrongSchoolsNC Public Health Toolkit

<https://files.nc.gov/covid/documents/guidance/Strong-Schools-NC-Public-Health-Toolkit.pdf>

StrongSchoolsNC Infection Control and PPE Guidance (K-12)

<https://files.nc.gov/covid/documents/guidance/education/Strong-Schools-NC-Public-Health-Toolkit-PPE-Guidance.pdf>

Reference Guide for Suspected, Presumptive, or Confirmed Cases of COVID-19 (K-12)

https://files.nc.gov/covid/PHT-ScreeningReferenceGuide_6.30.pdf

North Carolina Department of Public Instruction

<https://www.dpi.nc.gov/news/covid-19-response-resources>

CDC - Centers for Disease Control and Prevention

<https://www.cdc.gov/coronavirus/2019-nCoV/index.html>

Gates County Schools Policy Manual

<https://boardpolicyonline.com/?b=gates>



Appendix A: GCS Learning Options Form

Gates County Schools

Learning Options 2020-2021

Gates County Schools (GCS) is considering the option of re-opening schools in the 2020-2021 school year under Face-to-Face Plan A (Elementary) and Face-to-Face Blended Plan B (Middle & High). Gates County School parents/guardians with health and/or safety concerns will have the option to continue their child's participation in Virtual/Remote Learning Only.

All parents/guardians must complete this form with their choice of learning option for their child. One form must be completed for each child. Participation in Virtual/Remote Learning Only requires a nine-week commitment for elementary students and a one-semester commitment for middle and high school students. Students participating in Virtual/Remote Learning Only will be required to come on campus at the end of the school year to take state assessments.

Learning Options forms must be signed and dated by the parent/guardian and returned to the child's school by **Friday, November 20, 2020.**

Elementary Face-to-Face Plan A:

- Temperature checks and wellness attestations for staff and students daily
- 4 days a week face-to-face instruction on campus, one day remote
- Social distancing in the classrooms, hallways and buses
- Masks worn except during outdoor recess and lunch (other short mask breaks as needed)
- Breakfast and lunch in the classroom with the exception of Pre-K, Kindergarten and First Grade

Middle and High School Face-to-Face Plan B:

- Temperature checks and wellness attestations for staff and students daily
- At least 2 days of face-to-face instruction on campus
- Social distancing in the classroom, hallways and buses
- Masks worn except during lunch and mask breaks
- Breakfast and lunch in the classrooms



2020-2021 GCS Learning Options Form

Student's Name: _____

Student's Grade Level for the 2020-2021 School Year: _____

Student's School:

_____ Buckland Elementary _____ Gatesville Elementary _____ T.S. Cooper Elementary
_____ Central Middle _____ Gates County High

Learning Option Choice:

_____ Face-to-Face Plan A - Elementary
_____ Face-to Face Plan B - Middle and High
_____ Virtual/Remote Learning Only - All Schools

Virtual/Remote Learning Only Option: Parents who opt for their child to participate in Virtual/Remote Learning Only due to COVID-19 concerns, after the reopening of schools under Plan A or Plan B, must check to agree to the following:

- I confirm the student has daily access to a reliable internet connection and a Chromebook or Laptop or iPad OR will be on packet (pencil/paper) participation.
- The student commits to remain in Virtual/Remote Learning Only for a minimum of nine weeks for elementary students and one semester for middle and high school students.
- The student will participate in daily virtual/remote learning.
- The student will participate in state and local assessments (benchmarks and course exams). State assessments will be given on campus.
- I recognize that some courses for high school and middle school students are incompatible with Virtual/Remote Learning Only and might need to be postponed until the student returns to Face-to-Face instruction OR might require the student to come to the school for lab/skills work.

Meal Option: (All meals are free to all students for the 2020-2021 school year)

_____ School Meals _____ Meals provided by the home

Transportation Option (Face-to-Face Students Only):

_____ School Bus _____ Parent Provided (such as parent brings child to school)

Parent/Guardian Contact Information:

Name: _____

Phone Number: _____

Email Address: _____

Parent/Guardian Signature Date

Office Use Only Date Received: _____ Received by: _____

Appendix B: Attestation Ticket

Attestation Ticket

Students will be given a weekly Attestation Ticket Booklet. Parents/guardians are required to attest to the health of their child based on COVID-19 symptoms each day that the student will be attending school for face-to-face instruction. If the student is a school bus rider, they must present a signed ticket with all questions answered “NO” to the school bus driver prior to getting on the school bus. Students who drive to school or are transported to school by vehicle, must present the signed ticket with all questions answered “NO” to the staff member at the school entrance.

Below is a sample of the cover of the Attestation Ticket Booklet and a sample of the Attestation Ticket:

Gates County Public Schools Symptom Checklist Ticket



DAILY COVID-19 SYMPTOM CHECKLIST FOR GATES COUNTY STUDENTS

YES

NO

- Has your child had close contact (within 6 feet for at least 15 minutes) in the last 14 days with someone diagnosed with COVID-19, or has any health department or health care provider been in contact with you and advised quarantine?

- Does your child have any of these symptoms: fever, chills, shortness of breath or difficulty breathing, new cough, new loss of taste or smell?

- Has your child recently been diagnosed with COVID-19?

Student Name: _____ Date: _____

Parent/Guardian Signature: _____

School (circle one): GCHS CMS BES GES TSC

Appendix C: StrongSchoolsNC FAQs



StrongSchoolsNC

Public Health Toolkit (K-12)

Frequently Asked Questions

LAST UPDATED October 12, 2020

For Families, School Leaders, and Local Health Departments

General

Where can I find NC Department of Public Instruction’s operational guidance for school reopening?

NCDPI has provided guidance for schools across the state to consider as they open for in-person instruction, as well as considerations for remote learning. [Read more](#) by clicking the link.

How are children affected by COVID-19?

Children, particularly younger children, may be less likely than adults to become infected with COVID-19, even after being exposed to someone with COVID-19, and may have mild to no symptoms. Newer findings suggest there may be an undercount of the actual number of children infected, and more cases in children have been detected recently.

Children under 10 years of age may be less likely to spread COVID-19 to others than older teens and adults. Newer findings **may** suggest that younger children may be able to spread virus more than originally thought. Children may be more likely to get COVID-19 from an adult than to spread an infection to an adult. Spread of COVID-19 is more likely within a household than not within a household (such as school).

Why should my child to go back to school in-person?

Every family must make the right decision for themselves, knowing their community, their child’s school, and their child. We know that in person school is fundamental to children’s development and well-being—especially for younger children. Schools provide academic support, social and emotional skills, a safe, comfortable place, reliable food and nutrition supports, physical/speech therapy, and opportunities for physical activity. There can be substantial negative impacts for children and communities without in-person learning taking place regularly.

I have specific questions about my child and my school. Where can I find more information on how my school will take action on the public health guidance provided by NCDHHS?

Every child and every school is unique. NCDHHS issued statewide public health guidance through the StrongSchoolsNC Public Health Toolkit (K-12). NCDPI has since issued ongoing operational guidance, *Lighting Our Way Forward*, as a reference for schools to support their implementation of the public health requirements and recommendations. School districts and schools are building their own plans in response to the requirements and recommendations set forth in the StrongSchoolsNC Public Health Toolkit and the DPI operational guidance in order to mitigate the spread of COVID-19 in our public schools. Contact your school and/or district to find out more information on how they are planning to reopen their facilities to students and staff.

Why are elementary (K - 5th grade) schools able to choose to operate under Plan A, while middle and high (6th - 12th grade) schools cannot?

On September 17, 2020, Governor Cooper announced that the State would allow schools to expand options for in- person instruction to include a ‘Plan A’ option for all kindergarten – 5th grade students, effective October 5, 2020. This decision was made after careful consideration of recent trends of COVID-19 rates in the state, including stabilization of overall rates of laboratory confirmed COVID-19 cases, and evolving scientific evidence about the virus and younger children. This decision prioritizes in-person

learning for our youngest students, supports working families, and provides more children with the opportunity to access other critical services provided in schools, including meals, regular physical activity, and social interaction.

Given what we now know about how children are affected by COVID-19, especially young children, in conjunction with recent state trends, this is the right time to lessen restrictions for our youngest students. We will continue to evaluate emerging scientific evidence and look forward to the eventual increase of in-person instruction for middle and high school students.

Do preschool programs have to adhere to the requirements listed in the StrongSchoolsNC Public Health Toolkit (K-12)?

We know that preschool programs are an important part of our public schools across the state. We wanted to prevent any confusion in the release of this guidance regarding what public health requirements those preschool programs located in public schools should follow.

[The memorandum linked here](#) was issued on June 8th, 2020 jointly between the NC Department of Health and Human Services and the NC Department of Public Instruction. It states that preschool programs located in public schools, including NC Pre-K, EC, Title 1, and Head Start, should follow the [Interim Guidance for Child Care Settings ChildCareStrong](#), updated frequently. While similar to the K - 12 public health guidance, the child care guidance is better suited for early learning.

However, the memo notes that preschool programs located in public schools may be asked to take additional precautions on their campus, such as social distancing in the cafeteria. Outside of a public-school setting, we would not ask very young children to keep 6 feet apart from each other - however, if possible, preschool programs should follow campus-wide health protocols if asked to do so, especially in shared settings like hallways and the cafeteria. Students, families, and staff should consult local restrictions as they plan for the new school year.

Do the requirements in the StrongSchoolsNC Public Health Toolkit (K-12) apply to charter schools?

Yes - These requirements apply to public schools across North Carolina, including all charter schools, regional schools, and labschools.

How can non-public schools use the guidance in the StrongSchoolsNC Public Health Toolkit (K-12)?

While these requirements apply only to public schools across North Carolina, we hope they serve as a set of guidelines for nonpublic schools to help minimize the risk of COVID-19 exposure and spread.

Where can I find Spanish versions of the Public Health Toolkit and other resources?

It is important that all families of our students know what to expect when their children return to school, including our Spanish-speaking communities. [Click here](#) for the Spanish version of the Strong Schools NC Toolkit. Check back regularly on the [NCDHHS guidance page under Schools](#) for additional translated documents.

Cloth Face Coverings and Personal Protective Equipment (PPE)

Are face coverings/masks required at all times for North Carolina’s students, teachers, and staff when school buildings reopen?

See page 5 of the [StrongSchoolsNC Public Health Toolkit](#) for statewide requirements and recommendations on cloth face coverings.

We know that wearing a cloth face covering is one of the best tools we have for reducing the spread of COVID-19. When schools reopen across NC, face coverings will be required for all K – 12th grade students, teachers, staff and adult visitors unless the person (or family member, for a student) states that an exception applies, such as if the person is eating, drinking, or strenuously exercising. Face coverings must be worn by K-12 students, and all teachers, staff, and adult visitors inside school buildings, and anywhere on school grounds, including outside. They are also required while traveling on buses or other school transportation vehicles. Cloth face coverings are required when anyone is in-person in public schools in Plan A or Plan B.

Why are cloth face coverings required in addition to social distancing under Plan B?

Our statewide public health guidance requires cloth face coverings for our K-12 students and staff because it is important to mitigate the spread of the virus by providing this barrier for transmission, as well as requiring social distancing of 6 feet under Plan B. Individuals may unintentionally come closer together for periods of time throughout the day; with required cloth face coverings for all, our public schools are better protected from spread in those circumstances. The guidance is not intended to allow for the taking on and off of cloth face coverings when sitting at desks 6 feet apart in classrooms for extended periods of time, for example.

Has the State provided cloth face coverings for schools?

The State has provided five cloth face coverings for every student, teacher, and school staff member in North Carolina schools: public (including all charter schools) and private.

Are face shields an allowable substitute for a cloth face covering?

Based on recommendations from the CDC, [Executive Order 163](#) notes that face shields **do not** meet the requirements for face coverings in any setting. NC DHHS does not include face shields as acceptable substitutes for face coverings within the StrongSchoolsNC Public Health Toolkit (K-12). Teachers who require mouth visibility should use transparent face masks.

There is some evidence that face shields can protect the wearer from respiratory droplets spread by others. Unlike with face coverings, it is not known if face shields provide any benefit in controlling the spread of respiratory droplets to others (source control).

If an educator’s mouth must be visible for instructional purposes, what can they do?

For certain individuals, the use of cloth face coverings by teachers or others may pose a challenge, such as students who are deaf or hard of hearing, students receiving speech/language services, infants and young students in early education programs, students with Autism Spectrum Disorder (ASD), and English-language learners. If available, a transparent face mask, or face coverings with a see-through panel in the front, may be a better option for protection that allows visibility.

I'm worried about my child wearing a face covering all day. Are there any times when they can take it off?

Wearing a cloth face covering is required for all students K – grade 12, and for all teachers and school staff, unless a stated exception applies, or the individual is eating, drinking, or strenuously exercising. Schools/districts can also consider building in time throughout the school day when students, teachers, and staff can take short breaks from wearing cloth face coverings at times and in settings where risk for transmission is lower (e.g., outside and all people are consistently 6 feet apart). Mask breaks are recommended, but not required.

What should a child or a teacher/staff member do with their mask while eating or during a mask break?

The CDC [recommends](#) that cloth face coverings should be stored in a space designated for each student that is separate from others when not being worn (e.g., in individually labeled containers or bags, personal lockers, or cubbies).

If a teacher is more than 6 feet away from students and is inside a classroom, can they remove their mask while speaking?

Per page 5 of the [StrongSchoolsNC Public Health Guidance](#), cloth face coverings must be worn while inside school buildings, under Plan A and Plan B. Our statewide public health guidance requires cloth face coverings for our K-12 students and staff because it is important to mitigate the spread of the virus by providing this barrier for transmission, as well as requiring social distancing of 6 feet under Plan B. Individuals may unintentionally come closer together for periods of time throughout the day; with required cloth face coverings for all, our public schools are better protected from spread in those circumstances. The guidance is not intended to allow for the taking on and off cloth face coverings when 6 feet apart in classrooms for extended periods of time.

Are plexiglass /vinyl barriers substitutes for distancing if masks are also worn?

No – these mitigation efforts should be layered as opposed to thinking of them as alternatives in order to ensure the greatest possible avoidance of exposure to COVID-19.

Where can I find more guidance about the Personal Protective Equipment (PPE) and infection control materials recommended for schools and ordering information?

NCDHHS partnered with NCDPI, NCDOA, and the Office of Emergency Management to release [StrongSchoolsNC Infection Control and PPE Guidance for K – 12 schools](#). This document provides detailed guidance, information on ordering using state contracts, and distribution of two-month PPE starter packs for school nurses and delegated staff, as well as information on cloth face coverings provided for all students, staff, and teachers at public schools across North Carolina.

My company manufactures PPE and/or infection control materials, such as cloth face coverings. How can I be considered as a vendor for the state?

North Carolina needs companies and manufacturers that can produce and provide critical supplies to respond to the COVID-19 pandemic.

Please complete the form [linked here](#). All required fields must be completed in order to be considered for a procurement.

School Operations: In-Person with Minimal Social Distancing (Plan A), In- Person/Hybrid with Required 6 Ft. Social Distancing (Plan B) or Remote- Only (Plan C)

Which operational plan will my child's school reopen under?

See pages 1, 2, and 14 of the [StrongSchoolsNC Public Health Toolkit](#) for more information on Plans A, B, and C. Consult directly with your child's school to learn more about specific operational plans.

Kindergarten – 5th Grade Students: Effective October 5, 2020, and until further notice, schools may choose to operate in 'Plan A' for all kindergarten – 5th grade students. If schools choose to operate in 'Plan A,' they must operate under 'Plan A' health and safety requirements, outlined in this Toolkit, while in school buildings and on school grounds. Schools may choose a more restrictive 'Plan B' or 'Plan C.' Schools may choose between 'Plan A,' 'Plan B' or 'Plan C' at any time. If schools operate under 'Plan A,' it is strongly recommended that they operate school transportation under 'Plan B' health and safety requirements, outlined in this Toolkit.

6th – 12th Grade Students: Effective October 5, 2020 and until further notice, schools may choose to operate in 'Plan B' or 'Plan C' for all 6th – 12th grade students. If schools choose to operate in 'Plan B,' they must operate under 'Plan B' health and safety requirements, outlined in detail in this Toolkit, unless they choose the more restrictive 'Plan C.' Schools may choose between 'Plan B' and 'Plan C' at any time.

Schools have flexibility in how they choose to implement the requirements and it is expected that all schools will also offer full-time virtual instruction for higher-risk students and teachers, and for families opting for remote learning for their children.

If my school building and/or my school transportation includes a mix of Kindergarten through 5th and other grades, can we still implement Plan A as an option?

School Building: If a school building serves Kindergarten through 5th grade in addition to other grades, from October 5th, 2020, until further notice, only the K - 5 grades may operate under Plan A.

School Transportation: If a school transportation vehicle serves kindergarten through 5th grade in addition to other grades, from October 5th, 2020, until further notice, the school transportation vehicle must operate under Plan B.

The requirements for school transportation under Plan B are:

- No more than one passenger may be seated per school bus bench seat with the exception that members of the same household may share a seat.
- No more than two students may be seated in a non-bus vehicle unless all students in the vehicle are members of the same household.

Are school districts allowed to provide remote learning during the 2020-21 school year?

School districts and charter schools are required under legislation to develop remote learning plans for the 2020-21 school year. Under the guidance for all plans (A, B, and C), all schools should provide a remote learning option for all families, and all schools are required to provide remote learning instruction

for students who (or a family who) identifies as high-risk for severe disease due to COVID-19. Based on an [advisory letter](#) from the NC Department of Justice, school districts do have the authority under existing legislation to schedule remote learning days as needed based on health and safety needs of students and teachers, including prior to August 24.

Can schools re-open in remote learning only (Plan C)?

Under the NCDHHS guidance, school districts or charter schools may choose to be more restrictive than the state- announced lowest levels of restriction (as of October 5th, Plan A for K – 5th grade, and Plan B 6th – 12th grade,) but they may not be less restrictive. (For example, 6th – 12th grade may not operate at a Plan A level.)

Is social distancing required by Plan A?

Social distancing is recommended under Plan A, but is not required. Under Plan A, schools can bring back more students, therefore other required mitigation strategies are even more critical: wearing cloth face coverings, keeping hands washed and surfaces clean, and the recommended emphasis on cohorting students and teachers into groups that will not intermix.

Transportation

How are we keeping school buses as safe as possible for students, and still able to operate?

For transportation requirements, see page 12 of the [StrongSchoolsNC Public Health Toolkit](#).

NCDHHS continues to work closely with our partners at NCDPI and the State Board of Education to ensure that all public health guidance for K – 12 schools is operationalized thoughtfully across the state. NCDHHS updated the Plan B transportation guidance section as of June 30, 2020 to support greater operational feasibility in school transportation that will still require mitigation efforts to reduce the spread of COVID-19.

Additionally, as of October 5th, 2020, schools may choose to operate in Plan A for all kindergarten – 5th grade students. However, if schools operate under Plan A, they are strongly encouraged to operate school transportation under Plan B health and safety requirements. Given that school transportation vehicles are more confined spaces than classrooms, and that at maximum capacity a school bus could hold up to 70 children, Plan B ensures density reduction on school transportation to allow for additional social distancing in those settings to reduce the potential risk of viral exposure.

All Plan B schools utilizing transportation are required to adhere to Plan B requirements for transportation:

- No more than one passenger may be seated per school bus bench seat with the exception that members of the same household may share a seat.
- No more than two students may be seated in a non-bus vehicle unless all students in the vehicle are members of the same household.

What if a school transportation vehicle serves kindergarten through 5th grade in addition to other grades?

If a school transportation vehicle serves kindergarten through 5th grade in addition to other grades, from October 5th, 2020, until further notice, the school transportation vehicle must operate under Plan B.

The requirements for school transportation under Plan B are:

- No more than one passenger may be seated per school bus bench seat with the exception that members of the same household may share a seat.
- No more than two students may be seated in a non-bus vehicle unless all students in the vehicle are members of the same household.

You should contact your child's school to learn more about the operational procedures your campus is planning.

What should be done if a child is symptomatic at a bus stop?

Any student, staff member, or any other person entering a school facility, such as a school building or a transportation vehicle, must be screened for COVID-19 symptoms and have their temperature checked. For students boarding school transportation on the way to school, a school may institute a daily parent/guardian attestation form which includes the screening questions. However, if screening does not take place upon boarding the bus, these students must complete the screening process for COVID-19 symptoms and have their temperature checked, prior to entering the school building. Decisions such as whether to use an attestation form and the format (paper versus electronic) are up to individual schools/districts. Any additional considerations and/or questions regarding operationalizing these requirements should be directed to NCDPI and NCSBE. Schools should have an operational procedure for specific situations such as what to do if a symptom positive student arrives at the bus stop and a parent/guardian is not available. However, in cases where there is no other option, a symptomatic child could be placed in a seat on the bus with social distancing protocols in place, and ventilation on the bus can be increased by opening windows. Consult with DPI for further guidance.

Specials and Extracurricular Activities (e.g., Athletics, Gym, Music, Band, Art)

What are the requirements for school sports and physical education?

Schools can continue sports activities in person in accordance with the recommendations outlined in the [NCDHHS Interim Guidance for Administrators and Participants of Youth, College, and Amateur Sports Programs](#) (also available in [Spanish](#)).

For school year requirements and recommendations, see page 4 of the [StrongSchoolsNC Public Health Toolkit](#) on social distancing and minimizing exposure.

Schools are required to choose physical education activities that limit the use of shared equipment and any close contact between students during those activities is limited and brief. Additionally, schools are required to discontinue in-person activities that involve bringing together large groups of people or activities that do not allow for social distancing.

What guidance is provided for “specials,” such as music class, band, and art?

See page 4 of the [StrongSchoolsNC Public Health Toolkit](#) for recommendations on screening on careful consideration of music and band – limiting activities is recommended when there may be singing or the playing of wind instruments. Cleaning is required of any shared materials, such as instruments, or art supplies, noted on page 7 of the Toolkit.

Keeping Schools Clean

How will we keep schools clean enough to reduce the risk of COVID-19 exposure and spread?

See page 7 of the [StrongSchoolsNC Public Health Toolkit](#) for the statewide requirements and recommendations.

The [StrongSchoolsNC Public Health Toolkit \(K-12\)](#) lays out a comprehensive set of health practices that public schools must follow to minimize risk of exposure to COVID-19 for students, staff, and families. The Toolkit outlines actions that schools must take to minimize spread of COVID-19 while allowing in-person teaching to resume, such as social distancing requirements, screening protocols for COVID-19 symptoms, and thorough cleaning and hygiene routines.

Schools are required to take the following actions, among many more, to keep buildings, surfaces, objects, and hands clean:

- Provide adequate supplies to support healthy hygiene behaviors (e.g., soap, hand sanitizer with at least 60% alcohol for safe use by staff and older children, paper towels, and tissues).
- Teach and reinforce handwashing with soap and water for at least 20 seconds and/or the safe use of hand sanitizer that contains at least 60% alcohol by staff and older children. Younger children should be able to use alcohol-based hand sanitizer, as long as they are doing so under adult supervision, and the bulk containers are being stored away from students.
- Provide hand sanitizer (with at least 60% alcohol) at every building entrance and exit, in the cafeteria, and in every classroom, for safe use by staff and older students.
- Establish a schedule for and perform ongoing and routine environmental cleaning and disinfection of high-touch areas, such as faucet handles, EPA approved disinfectant
- Limit sharing of personal items and supplies

The NC Department of Health and Human Services is asking people to remember these three things as we stay strong and continue to flatten the curve and slow the spread of COVID-19: Wear, Wait, Wash. Wear a cloth face covering if you will be with other people. Wait 6 feet apart and avoid close contact. Wash your hands often with soap and water for at least 20 seconds or use hand sanitizer. These actions can protect our families and neighbors as the state takes a cautious step forward to ease restrictions while the virus is still circulating.

If the biggest risk for COVID-19 exposure seems to be through airborne particulates, why is there still so much emphasis on rigorous cleaning?

Surface-based cleaning and disinfection is important in combination with social distancing. While we know that most known outbreaks have come from close contact, there is risk of exposure from touching a

contaminated surface and then touching one's eyes, nose, or mouth. All infection control measures need to be used together for additive protection.

Is Hand Sanitizer Safe for Schools to Use?

Making hand sanitizer containing at least 60% alcohol available for students and staff is a required component of the [StrongSchoolsNC Public Health Toolkit](#).

Alcohol based hand sanitizers with at least 60% alcohol are known to be effective against SARS-CoV-2 virus and can be placed in dispensers and other containers that are readily available for student use. This availability of hand sanitizer should not be considered a violation of 15A NCAC 18A .2415(b). While Executive Order No. 116, (Declaration of a State of Emergency to Coordinate Response and Protective Actions to Prevent the Spread of COVID-19) or another State of Emergency declaration is in effect during this school year, such hand sanitizer dispensers may be used by students without being considered a violation of Rule .2415 if handled in a safe manner supervised by teachers or other adults in accordance with the directions on the label, and bulk containers of hand sanitizer are stored according to manufacturer's instructions when not in use.

How should an isolation room be kept clean if it needs to be used more than once in a school day?

NCDHHS recommends using [this guidance](#) from the CDC on cleaning and disinfection to inform these practices. Waiting 24 hours before cleaning may not be practical in school settings for an isolation room, so we recommend increasing ventilation between sick students and providing disinfection of the areas once the student leaves —of course, following manufacturer's instructions for use and contact time. In addition, try to cut down on soft surfaces in the room that are difficult to clean/disinfect.

Screening and Reducing Exposure

What is required for COVID-19 screening and monitoring symptoms among students and staff at schools?

See page 8 of the [StrongSchoolsNC Public Health Toolkit](#) for the statewide requirements and recommendations on screening for and monitoring COVID-19 symptoms.

Any student, staff member, or any other person entering a school facility, such as a school building or a transportation vehicle, must be screened for COVID-19 symptoms and have their temperature checked. For students boarding school transportation on the way to school, a school may institute a parent/guardian attestation form that states their child does not have COVID-19 symptoms. However, this student must be screened for COVID-19 symptoms and have their temperature checked prior to entering the school building. Frequency and process is up to that school/district, such as paper versus an electronic form and if a school/district chooses to implement a parent/guardian attestation form. To learn if your school/district is using a parent/guardian attestation form, reach out to your school leadership.

Who should conduct symptom screenings?

The NCDHHS [Reference Guide for Suspected, Presumptive, or Confirmed Cases of COVID-19](#) notes in the diagram on Page 3 that any school staff person could conduct screenings. Recently, the CDC updated their guidance recommending that universal symptom screening be

conducted by parents or caregivers before students go to school each day. NCDHHS continues to evaluate guidance on screening procedures and will widely share any changes to those policies. For more information, please visit the CDC guidance available online: [Screening K-12 Students](#).

I have seen some information on social media regarding infrared thermometers used for screening in schools and possible negative effects. Can these thermometers cause harm?

Infrared thermometers are safe for use in reading the surface temperature of a child or adult. Infrared thermometers measure the body's surface temperature without emitting any radiation or signal to do so. The human body itself emits radiation in the form of heat. That heat is called infrared radiation. An infrared thermometer reads that heat radiation coming off of the skin of the forehead, it receives radiation, it does not send radiation. The amount of heat radiation being picked up from a child is converted by the thermometer into a temperature value. That is why sometimes a child that is flushed and hot from being outside will read as having a fever, they are temporarily putting out a lot of body heat radiation. If they are allowed to rest and cool off, they will read normal later.

How are “Exposure” and a “Close Contact” defined?

Exposure to COVID-19, or being in close contact, is defined as being physically exposed within 6 feet of another person for 15 minutes cumulatively with or without a cloth face covering. Currently, there is no specific time interval defined, but 15 minutes or more cumulatively within one day could be considered (e.g. 5 minutes in at arrival, 5 minutes at lunch, and 5 minutes at dismissal). Any person who has had close contact to someone who has tested positive for COVID-19 should quarantine for 14 days after the last close contact. If no symptoms develop nor do they have a positive COVID-19 test, they may return to school after the 14-day quarantine. Please see our [Reference Guide for Suspected, Presumptive, or Confirmed cases of COVID-19](#) for more information.

Will the Local Health Department share identifying information about my school, me, or my child if we contract the virus?

Your privacy and your child's privacy are prioritized during this health crisis. Information may be shared under GS 130A-143(4) when necessary for public health and implementation of control measures. A local health department may share more information about a person who has tested positive with a school if it is “necessary to prevent transmission in the facility or establishment [i.e., school] for which they are responsible.” However, the local health department is responsible for ensuring that a school is instructed to protect confidentiality.

NCDHHS does not publicize the names of individuals who test positive for COVID-19, nor the name of a school that individual works at or attends. If a cluster (five laboratory-confirmed positive cases of COVID-19 that have a connection at a specific location or a specific event) outbreak is reported at a school, NCDHHS will post the name of the school, public or private, to [this public report](#) released twice weekly.

Are medical professionals caring for COVID-19 patients excluded from screening for exposure?

Screening for exposure would not require the exclusion of medical professionals who may have been

exposed to COVID-19 positive individuals while wearing proper PPE. This would include nurses, physician assistants, physicians, medical staff, or individuals delegated at schools to perform medical tasks. We are following CDC Guidance on this topic.

Testing and Positive Cases

Will students and teachers need to be tested for COVID-19 before they come back to school?

No, students and teachers are not required to be tested for COVID-19 before they come back to school. Schools are required to conduct symptom screenings, including temperature checks, of any person entering a school building or school transportation vehicle including students, teachers, staff, family members and other visitors.

Can a student receive a COVID-19 test without the consent of a parent or guardian?

In general, receiving consent from parents or guardians for student testing for COVID-19 is the expectation and will be the normal process. However, pursuant to G.S. 90-21.5, minors with decisional capacity may consent for testing for COVID-19 (a novel coronavirus), as it is considered a medical health service for the diagnosis of a reportable disease. The UNC School of Government has a post summarizing the law on decisional capacity. It can be found [here](#).

How will new cases of COVID-19 be handled in our schools?

NCDHHS released the [Reference Guide for Suspected, Presumed, or Confirmed Cases of COVID-19](#). The guide details how schools should handle these scenarios and should be used in schools across the state.

Specifically, this reference guide outlines protocols that staff should follow when interacting with students or staff who:

- 1) Share they were exposed to someone with COVID-19 (defined as having close contact of less than 6 feet distance for more than 15 minutes) but have no symptoms
- 2) Share they were diagnosed with COVID-19 less than 10 days ago but are not symptomatic,
- 3) Present with at least one of the following COVID-19 symptoms (fever, chills, shortness of breath or difficulty breathing, new cough, new loss of taste or smell).

Where can I find more information about isolation and quarantine practices, especially if I live with someone who may have COVID-19?

Quarantine is used to keep someone who might have been exposed to COVID-19 away from others. Quarantine helps prevent the spread of disease that can occur before a person knows they are sick or if they are infected with the virus without feeling symptoms. People in quarantine should stay home, separate themselves from others, monitor their health, and follow directions from their state or local health department. For more information about when and how to quarantine due to COVID-19 exposure, please read over the [English](#) or [Spanish](#) guide.

Is there any required documentation for teachers/students that were exposed or tested positive to return to school?

We know how important it is for our students, especially our youngest students, to be in schools for their

educational development. We are not requiring students and employees to provide documentation of a negative test prior to returning to school after having a positive diagnosis for COVID-19 in order to reduce barriers to children returning to school. This is especially important for our students whose families may have financial, logistical, or other barriers to being tested.

Where can I learn more about COVID-19 testing and K-12 Schools?

We know that many people have questions about the use of COVID-19 testing in education settings and/or among adults and children who work at or attend a K-12 school. This is an emerging area of public health practice and there is currently limited scientific or evidenced-based data on effective and efficient testing protocols and strategies.

As more public health research evolves and more is learned, the North Carolina Department of Health and Human Services (NCDHHS) will update the [linked considerations](#) as a reference for Local Education Agencies (LEAs) - including independent public schools and charters - and private schools, in consultation with their Local Health Departments (LHDs) to determine their own local approaches to administering COVID-19 tests, at their discretion.

Vulnerable and High-Risk Children, Families, and School Staff

How should North Carolina schools support the health and wellbeing of students and staff who might be at high-risk for severe disease due to COVID-19 as they plan for reopening?

See page 6 of the [StrongSchoolsNC Public Health Toolkit](#) for the statewide requirements and recommendations.

Protecting vulnerable populations is critical to support the health and safety of our students, their families, and our staff across North Carolina's public schools. You should connect directly with your school for support as they finalize their plans for returning to school buildings. Remote learning options must be provided for students who are at high-risk for severe disease due to COVID-19, or whose family members are at high-risk.

Individuals who are considered high-risk for severe illness due to COVID-19 include people who:

- Are 65 years of age or older
- Have a high-risk condition that includes:
 - chronic lung disease or moderate to severe asthma
 - heart disease with complications
 - compromised immune system
 - severe obesity
 - body mass index of 40 or higher
 - other underlying medical conditions, particularly if not well controlled, such as diabetes, renal failure or liver disease

If you are interested in more information on who is at higher risk for severe illness due to COVID-19,

please take a look at these links available from the [CDC](#) and [NCDHHS](#). You should also view the [operational guidance](#) provided by the Department of Public Instruction with resources for how schools can take these requirements and implement them on their campuses.

Contact Information

My question has not been answered here. Who should I contact?

For Families

- For questions specific to your child's school, such as scheduling, operations, remote learning options, and specifics about screening procedures, reach out to your local school leaders, such as your school's principal.
- For questions about your child's school's adherence to public health guidance, contact your local school board, your school district leadership (superintendent), or the NC State Board of Education.

For Local Education Leaders and Local Health Departments

- For questions about NCDHHS statewide guidance related to reopening NC's public schools not covered in this FAQ document, email StrongSchoolsNC@dhhs.nc.gov.
- The NC DHHS Division of Public Health Epidemiologist is on call and available to assist 24/7 (919-733-3419).

Appendix D: Albemarle Regional Health Services
Current Data and Contact Information

ALBEMARLE REGIONAL HEALTH SERVICES

Partners in Public Health: Inspiring people to lead healthy lives.

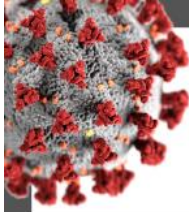
Pasquotank • Perquimans • Camden • Chowan • Currituck • Bertie • Gates • Hertford



Pasquotank County Health Department 252-338-4400	Perquimans County Health Department 252-426-2100	Camden County Health Department 252-338-4460	Chowan County Health Department 252-482-6003
Currituck County Health Department 252-232-2271	Bertie County Health Department 252-794-5322	Gates County Health Department 252-357-1380	Hertford County Health Department 252-862-4054

www.arhs-nc.org

252-338-WELL



ALBEMARLE REGIONAL HEALTH SERVICES

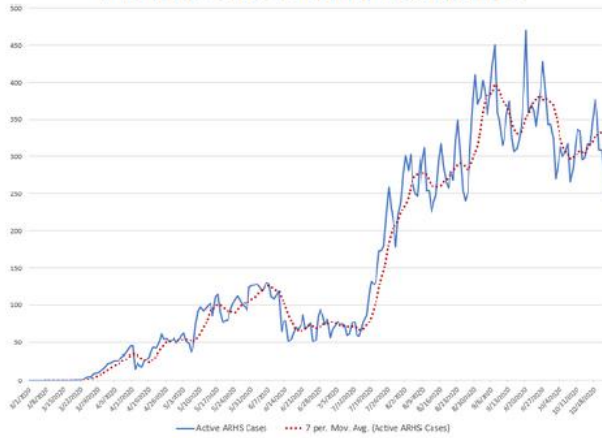
Partners in Public Health: Inspiring people to lead healthy lives.

Pasquotank • Perquimans • Camden • Chowan • Currituck • Bertie • Gates • Hertford

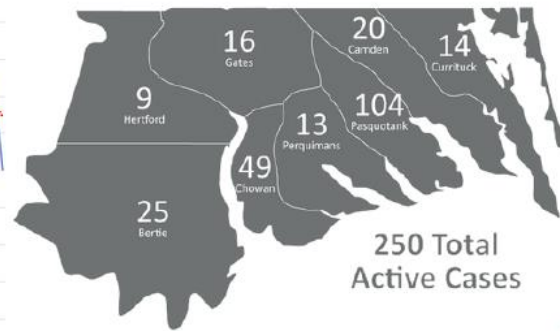
COVID-19 Surveillance Report

October 23, 2020

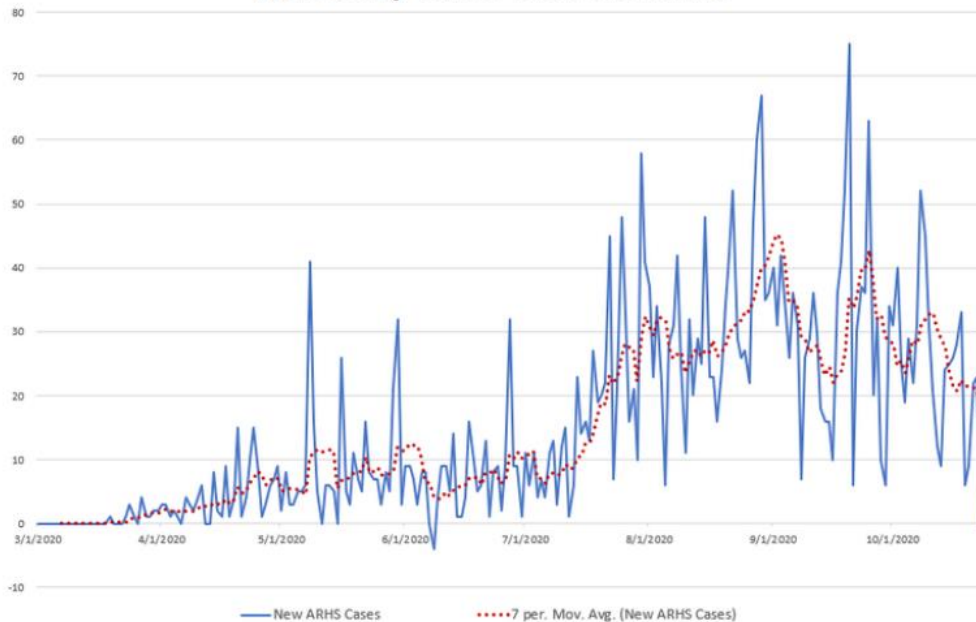
Active Cases with Trendline



Current Active Cases by County

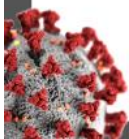


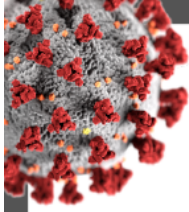
New Daily Cases with Trendline



*Note: Negative trends are due to cases being transferred to home counties or removing duplicate cases in the system

Data shown here is based on NC Electronic Disease Surveillance System Data as of **October 22, 2020 at 12:00 pm** and represents **LAB CONFIRMED** (PCR & Antigen) cases only. The actual number of cases may be higher.





ALBEMARLE REGIONAL HEALTH SERVICES

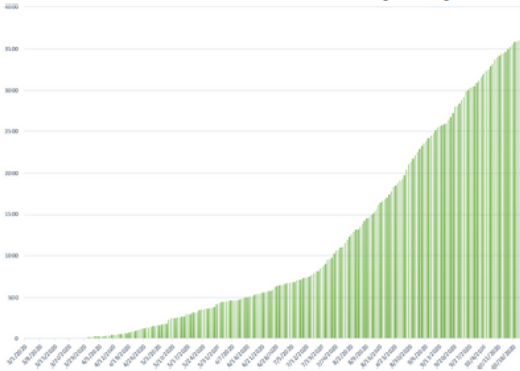
Partners in Public Health: Inspiring people to lead healthy lives.

Pasquotank • Perquimans • Camden • Chowan • Currituck • Bertie • Gates • Hertford

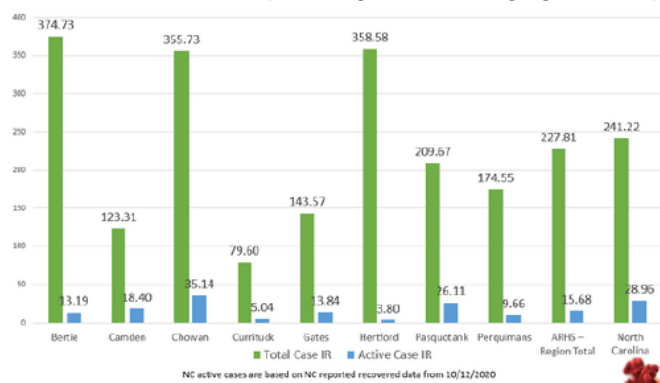
COVID-19 Surveillance Report

October 23, 2020

Total Case Count by Day



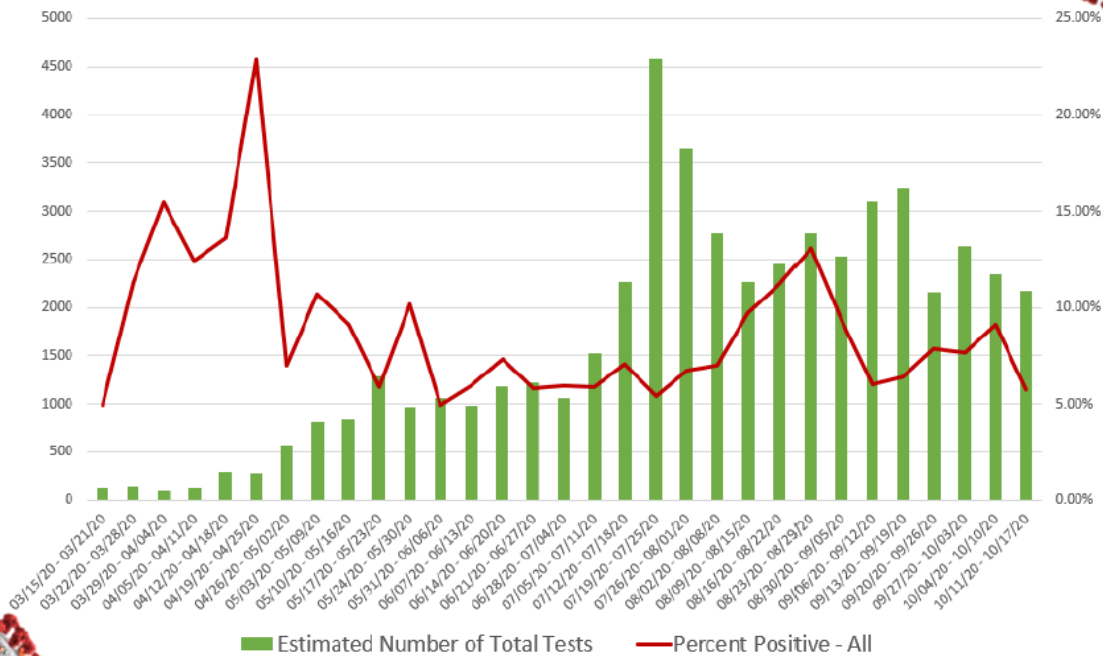
Incidence Rate (Cases per 10,000 population)



NC active cases are based on NC reported recovered data from 10/12/2020

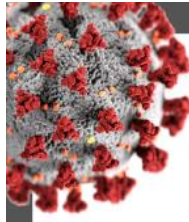
Data shown here is based on NC Electronic Disease Surveillance System Data as of **October 22, 2020 at 12:00 pm** and represents **LAB CONFIRMED** (PCR and Antigen) cases only. The actual number of cases may be higher.

ARHS Total COVID Tests vs Percent Positive



Estimated Number of Total Tests Percent Positive - All

Test results are from NCDHHS and represent all reported lab results for the ARHS region.



ALBEMARLE REGIONAL HEALTH SERVICES

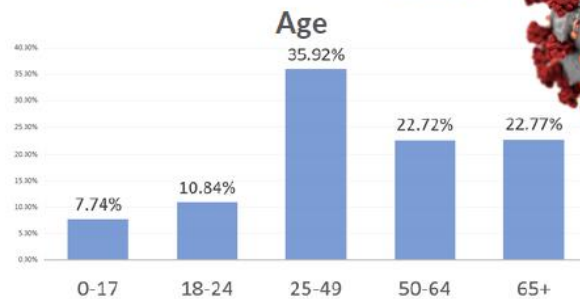
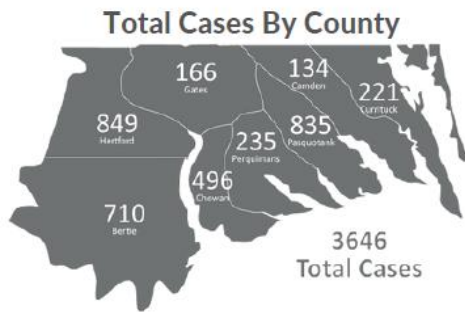
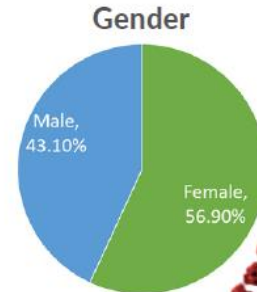
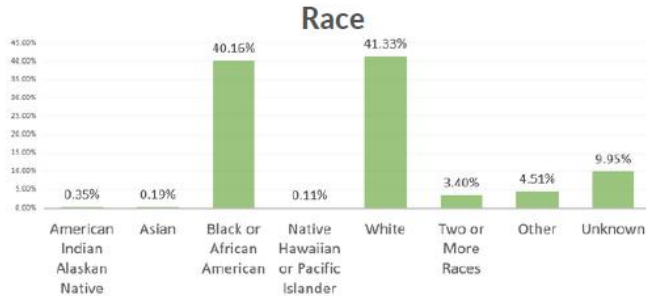
Partners in Public Health: Inspiring people to lead healthy lives.

Pasquotank • Perquimans • Camden • Chowan • Currituck • Bertie • Gates • Hertford

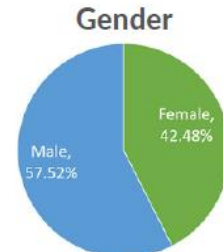
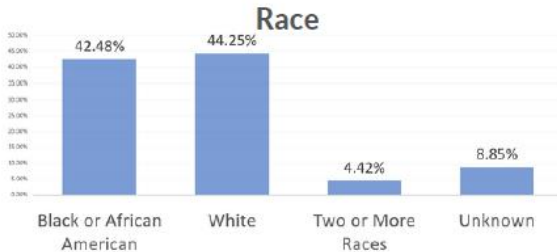
COVID-19 Surveillance Report

October 23, 2020

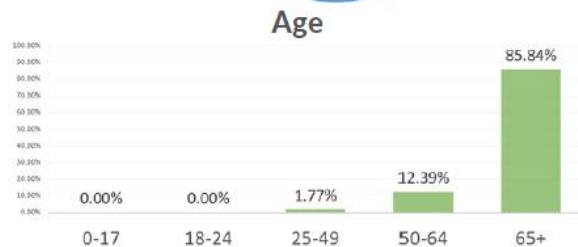
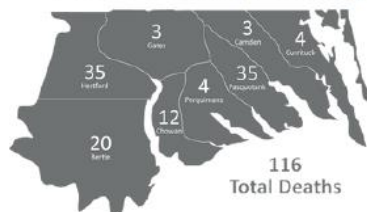
ARHS COVID-19 Case Demographics: All Lab Confirmed Cases



ARHS COVID-19 Case Demographics: Deceased Patients



Total Deaths By County



Data shown here is based on NC Electronic Disease Surveillance System Data as of **October 22, 2020 at 12:00 pm** and represents **LAB CONFIRMED** (PCR and Antigen) cases only. The actual number of cases may be higher.

gs